

Ecoflex® Potable PEX

Submittal Information

Revision E: Feb. 3, 2014

Project Information

Job Name:

Location: _____ Part No. Ordered: _____

Engineer: _____ Date Submitted: _____

Contractor: _____ Submitted By: _____

Manufacturer's Representative: _____ Approved By: _____

Technical Data

Service Pipe: Crosslinked polyethylene (PEX-a) Engel method; PEX 5106; NSF-certified SDR-9

Insulation: Multilayered, closed-cell, crosslinked polyethylene (PEX) foam insulation with a thermal conductivity of 0.26 BTU in./sq.ft./hour/°F; vapor permeability of 0.1g/100 sq. in./day

Jacket: Corrugated, seamless high-density polyethylene (HDPE); UV-protected

Operating Limits: 200°F at 80 psi (93°C at 5.5 bar)

180°F at 100 psi (82°C at 6.9 bar)

73°F at 160 psi (23°C at 11.0 bar)



Product Information and Application Use

The Ecoflex® Potable PEX product features Uponor AquaPEX® service pipe protected by multilayer PEX-foam insulation and covered by a corrugated, waterproof HDPE jacket. Use Ecoflex Potable PEX for hot and cold potable-water applications.

✓ Description	Part Number	Service Pipe O.D.	Service Pipe I.D.	Foam Thickness	Insulation Value ²	Bend Radius	Weight (lbs./ft.)
¾" Potable PEX with 2.7" Jacket, 1,000-ft. coil	5212775	0.875"	0.671"	0.71"	R-3.43	6"	0.35 lbs.
1" Potable PEX with 2.7" Jacket, 1,000-ft. coil	5212710	1.125"	0.862"	0.59"	R-2.71	8"	0.38 lbs.
1" Potable PEX with 5.5" Jacket, 600-ft. coil	5215510	1.125"	0.862"	1.85"	R-10.30	10"	0.75 lbs.
1¼" Potable PEX with 5.5" Jacket, 500-ft. coil	5215513	1.375"	1.054"	1.73"	R-9.07	12"	0.85 lbs.
1½" Potable PEX with 6.9" Jacket, 300-ft. coil	5216915	1.625"	1.244"	2.13"	R-11.26	16"	1.40 lbs.
2" Potable PEX with 6.9" Jacket, 300-ft. coil	5216920	2.125"	1.629"	1.93"	R-9.50	18"	1.80 lbs.
3" Potable PEX with 7.9" Jacket, 300-ft. coil	5217930	3.125"	2.398"	1.93"	R-8.96	32"	2.80 lbs.

Installation

Install Ecoflex Potable PEX in hot or cold potable-water applications. Join pipes using Uponor ProPEX® or WIPEX™ fittings.¹ Ecoflex End Caps are required on all exposed ends of Ecoflex pipes to avoid ground water contamination. For additional information, refer to the Uponor Pre-insulated Pipe Systems Design and Installation Manual.

Standards

CSA B137.5; ASTM F876; ASTM F877; ASTM F1960; ASTM F2023; ASTM E84; ASTM E119/UL 263; NSF/ANSI Standard 14; NSF/ANSI Standard 61; AWWA C904³

Codes

UPC; IPC; NSPC; NPC of Canada

Listings

NSF/ANSI 14- and 61-certified; NSF-pw

Related Applications

Pre-insulated Pipe Systems
Permafrost Prevention Systems
Plumbing Systems

Contact Information

Uponor, Inc.
5925 148th Street West
Apple Valley, MN 55124 USA
Phone: 800.321.4739
Fax: 952.891.2008
www.uponorpro.com

Uponor Ltd.
2000 Argentia Road, Plaza 1, Suite 200
Mississauga, ON L5N 1W1 CANADA
Phone: 888.994.7726
Fax: 800.638.9517
www.uponorpro.com

¹ProPEX® is a registered trademark of Uponor, Inc. ProPEX™ is a trademark of Uponor Ltd.

²R-value is normalized based on the nominal foam thickness for a circular shape.

³This standard applies to ¾" Uponor AquaPEX tubing and larger.

Ecoflex® Potable PEX Twin

Submittal Information

Revision B: Feb. 3, 2014

Project Information

Job Name:

Location: _____ Part No. Ordered: _____

Engineer: _____ Date Submitted: _____

Contractor: _____ Submitted By: _____

Manufacturer's Representative: _____ Approved By: _____

Technical Data

Service Pipe: Crosslinked polyethylene (PEX-a) Engel method; PEX 5106; NSF-certified SDR-9

Insulation: Multilayered, closed-cell, crosslinked polyethylene (PEX) foam insulation with a thermal conductivity of 0.26 BTU in./sq. ft./hour/°F; Vapor permeability of 0.1g/100 sq. in./day

Jacket: Corrugated, seamless high-density polyethylene (HDPE); UV-protected

Operating Limits: 200°F at 80 psi (93°C at 5.5 bar)

180°F at 100 psi (82°C at 6.9 bar)

73°F at 160 psi (23°C at 11.0 bar)

Product Information and Application Use

The Ecoflex® Potable PEX Twin product features two Uponor AquaPEX® service pipes protected by multilayer PEX-foam insulation and covered by a corrugated, waterproof HDPE jacket. Use Ecoflex Potable PEX Twin for hot and cold potable-water applications. Join pipes using Uponor ProPEX® or WIPEX™ fittings.¹



✓ Description	Part Number	Service Pipe O.D.	Service Pipe I.D.	Foam Thickness	Insulation Value ²	Bend Radius	Weight (lbs./ft.)
1" Potable PEX Twin with 6.9" Jacket, 600-ft. coil	5226910	1.125"	0.862"	1.54"	R-11.04	20"	1.30 lbs.
1¼" Potable PEX Twin with 6.9" Jacket, 500-ft. coil	5226913	1.375"	1.054"	1.34"	R-9.06	28"	1.40 lbs.
1½" Potable PEX Twin with 6.9" Jacket, 300-ft. coil	5226915	1.625"	1.244"	1.06"	R-9.84	32"	1.55 lbs.
2" Potable PEX Twin with 7.9" Jacket, 300-ft. coil	5227920	2.125"	1.629"	1.06"	R-7.06	40"	2.68 lbs.

Installation

Install Ecoflex Potable PEX in hot or cold potable-water applications. Join pipes using Uponor ProPEX® or WIPEX™ fittings.¹ Ecoflex End Caps are required on all exposed ends of Ecoflex pipes to avoid ground water contamination. For additional information, refer to the Uponor Pre-insulated Pipe Systems Design and Installation Manual.

Standards

CSA B137.5; ASTM F876; ASTM F877; ASTM F1960; ASTM F2023; ASTM E84; ASTM E119/UL 263; NSF/ANSI Standard 14; NSF/ANSI Standard 61; AWWA C904³

Codes

UPC; IPC; NSPC; NPC of Canada

Listings

NSF/ANSI 14- and 61-certified; NSF-pw

Related Applications

Pre-insulated Pipe Systems
Permafrost Prevention Systems
Plumbing Systems

Contact Information

Uponor, Inc.
5925 148th Street West
Apple Valley, MN 55124 USA
Phone: 800.321.4739
Fax: 952.891.2008
www.uponorpro.com

Uponor Ltd.
2000 Argentia Road, Plaza 1, Suite 200
Mississauga, ON L5N 1W1 CANADA
Phone: 888.994.7726
Fax: 800.638.9517
www.uponorpro.com

¹ProPEX® is a registered trademark of Uponor, Inc. ProPEX™ is a trademark of Uponor Ltd.

²R-value is normalized based on the nominal foam thickness for a circular shape.

³This standard applies to ¾" Uponor AquaPEX tubing and larger.

ProPEX® Engineered Plastic (EP) Swivel Faucet Adapter

Submittal Information
Revision B: June 7, 2010

Project Information

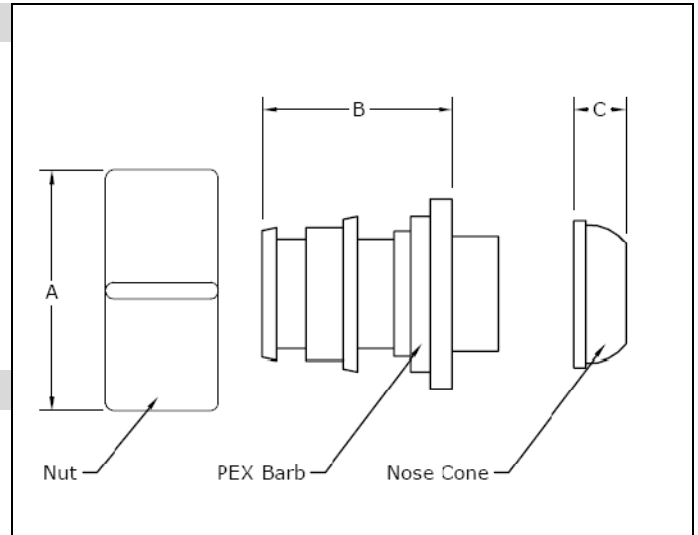
Job Name:	
Location:	Part No. Ordered:
Engineer:	Date Submitted:
Contractor:	Submitted By:
Manufacturer's Representative:	Approved By:

Technical Data

Nut:	Plastic
PEX Barb:	Udel® Polysulfone, 20% glass-reinforced
Nose Cone:	Ethylene Propylene Dimonomer (EPDM)
Maximum Temperature (no pressure):	320°F (160°C)
Maximum Working Temperature/Pressure:	210°F at 150 psi (99°C at 10.3 bar)

Product Information and Application Use

The ProPEX® Engineered Plastic (EP) Swivel Faucet Adapter is available for use in hot and cold domestic potable water systems.¹ One end is manufactured with the Uponor ProPEX Fitting for swivel connections to Uponor AquaPEX® tubing.



✓ Description	Part Number	A	B	C	NUT	Weight
ProPEX EP Swivel Faucet Adapter, 1/2" PEX x 1/2" NPSM	Q4360500	1.61"	1.01"	0.265"	0.50" NPSM	0.02 lbs.

Installation

Use the appropriate Uponor ProPEX Ring for the tubing. For more information, refer to the Uponor Professional Plumbing Installation Guide.

Standards

CAN/CSA B137.5; ASTM F877; ASTM F1960

Codes

IPC; UPC; NSPC; NPC of Canada

Listings

HUD MR 1269; ICC ESR 1099; ANSI/NSF 14- and 61-certified; IAPMO 3558

Related Applications

PEX-a Plumbing Systems

Contact Information

Uponor, Inc.
5925 148th Street West
Apple Valley, MN 55124 USA
Phone: (800) 321-4739
Fax: (952) 891-2008
www.uponor-usa.com

Uponor Ltd.
2000 Argentia Rd., Plaza 1, Ste. 200
Mississauga, ON L5N 1W1 CANADA
Phone: (888) 994-7726
Fax: (800) 638-9517
www.uponor.ca

¹ProPEX® is a registered trademark of Uponor, Inc. ProPEX™ is a trademark of Uponor Ltd.

ProPEX® Engineered Plastic (EP) Swivel Closet Adapter

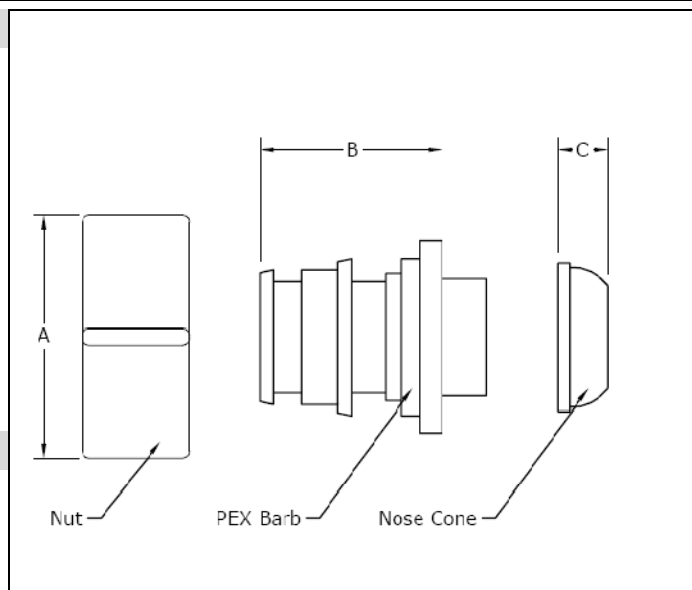
Submittal Information
Revision B: June 7, 2010

Project Information

Job Name:	
Location:	Part No. Ordered:
Engineer:	Date Submitted:
Contractor:	Submitted By:
Manufacturer's Representative:	Approved By:

Technical Data

Nut:	Plastic
PEX Barb:	UDEL® Polysulfone, 20% glass-reinforced
Nose Cone:	EPDM
Maximum Working Temperature/Pressure:	210°F at 150 psi (99°C at 10.3 bar)
Maximum Temperature (no pressure):	320°F (160°C)



Product Information and Application Use

The ProPEX® Engineered Plastic (EP) Swivel Closet Adapters are available for use in hot and cold domestic potable water systems.¹ One end features the Uponor ProPEX Fitting for swivel connections to Uponor AquaPEX® tubing.

✓ Description	Part Number	A	B	C	Nut	Weight
ProPEX EP Swivel Closet Adapter, 3/8" PEX x 7/8" Ballcock	Q4340375	1.13"	0.93"	0.43"	15/16"-14 NS-1	0.01 lbs.
ProPEX EP Swivel Closet Adapter, 1/2" PEX x 7/8" Ballcock	Q4340500	1.13"	1.05"	0.43"	15/16"-14 NS-1	0.02 lbs.

Installation

A ProPEX Ring is required to make a ProPEX connection. Use the appropriate Uponor ProPEX Ring for tubing connections. For more information, refer to the Uponor Professional Plumbing Installation Guide.

Standards

CAN/CSA B137.5; ASTM F877; ASTM F1960

Codes

IPC; UPC; NSPC; NPC of Canada

Listings

HUD MR 1269; ICC ESR 1099; ANSI/NSF 14- and 61-certified; IAPMO 3558

Related Applications

PEX-a Plumbing Systems

Contact Information

Uponor, Inc. 5925 148 th Street West Apple Valley, MN 55124 USA Phone: (800) 321-4739 Fax: (952) 891-2008 www.uponor-usa.com	Uponor Ltd. 2000 Argentia Rd., Plaza 1, Ste. 200 Mississauga, ON L5N 1W1 CANADA Phone: (888) 994-7726 Fax: (800) 638-9517 www.uponor.ca
--	--

¹ProPEX® is a registered trademark of Uponor, Inc. ProPEX™ is a trademark of Uponor Ltd.

Engineered Polymer (EP) Flow-through Multi-port Horizontal Tee

Submittal Information

Revision B: Oct. 10, 2013

Project Information

Job Name:

Location:

Part No. Ordered:

Engineer:

Date Submitted:

Contractor:

Submitted By:

Manufacturer's Representative:

Approved By:

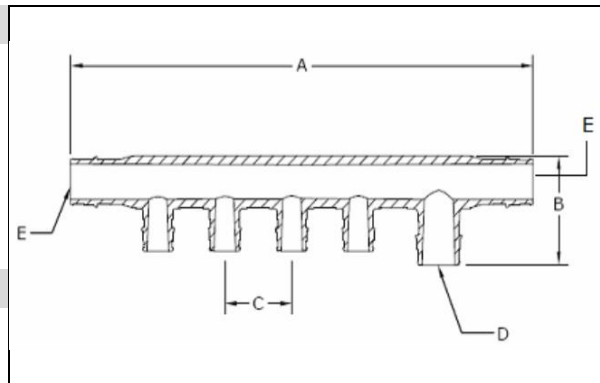
Technical Data

Material: UDEL® Polysulfone GF120

Maximum Temperature (no pressure): 320°F (160°C)

Maximum Working Temperature/Pressure: 210°F at 150 psi (99°C at 10.3 bar)

Maximum Multi-port Tee Flow for 3/4" Inlet: 13.2 gpm at 12 fps
8.8 gpm at 9 fps



Product Information and Application Use

Engineered Polymer (EP) Flow-through Multi-port Horizontal Tee is used in hot and cold domestic potable water distribution systems. This tee features 3/4" ProPEX® inlets with 1/2" ProPEX outlets.¹

✓ Description	Part Number	A	B	C	D	E	Weight
EP Flow-through Multi-port Horizontal Tee, 4 outlets, 3/4" x 3/4" x 3/4" ProPEX	Q2247577	8.66"	1.87"	1.25"	0.75" ProPEX	0.75" ProPEX	0.12 lbs.

Installation

Use any product designed to mount 1" copper pipe as a mounting bracket. For more information, refer to the Uponor AquaPEX® Professional Plumbing Installation Guide.

Standards

CAN/CSA B137.5; ASTM F877; ASTM F1960

Codes

IPC; UPC; NSPC; NPC of Canada

Listings

ANSI/NSF 14- and 61-certified; ICC ESR 1099; IAPMO 3946

Related Applications

PEX-a Plumbing Systems

Contact Information

Uponor, Inc.
5925 148th Street West
Apple Valley, MN 55124 USA
Phone: 800.321.4739
Fax: 952.891.2008
www.uponorpro.com

Uponor Ltd.
2000 Argentia Rd., Plaza 1, Ste. 200
Mississauga, ON L5N 1W1 CANADA
Phone: 888.994.7726
Fax: 800.638.9517
www.uponorpro.com

¹ProPEX® is a registered trademark of Uponor, Inc. ProPEX™ is a trademark of Uponor Ltd.

Commercial EP Flow-through Multi-port Tee

Submittal Information
Revision A: Sept. 25, 2013

Project Information

Job Name:

Location:

Part No. Ordered:

Engineer:

Date Submitted:

Contractor:

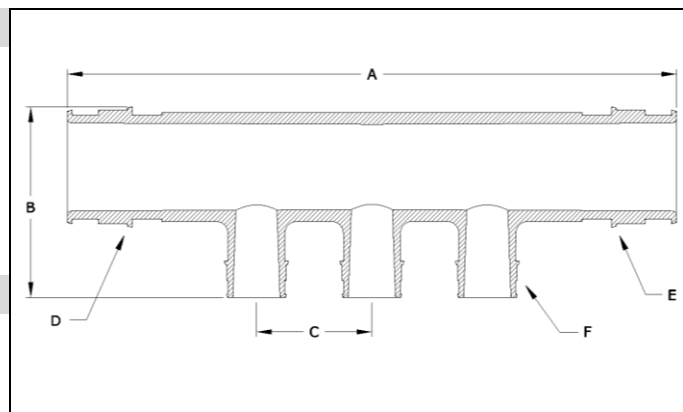
Submitted By:

Manufacturer's Representative:

Approved By:

Technical Data

Material:	Radel® R (Polyphenylsulfone)
Maximum Temperature (no pressure):	320°F (160°C)
Maximum Working Temperature/Pressure:	210°F (99°C) at 150 psi
Maximum Flow for 1" Outlet:	14.5 gpm at 8 fps 21.8 gpm at 12 fps
Maximum Flow for 2" Outlet:	51.9 gpm at 8 fps 77.9 gpm at 12 fps



Product Information and Application Use

Commercial EP Flow-through Multi-port Tee features 2" ProPEX® inlets with 1" ProPEX branch outlets for use with crosslinked polyethylene (PEX) piping.¹ The tee is made of engineered polymer (EP), a high-performance material used in demanding, hot-water applications.

✓ Description	Part Number	A	B	C	D	E	F	Weight
EP Flow-through Multi-port Tee, 3 (1") outlets, 2" x 2" ProPEX	Q2232102	10.6"	3.3"	2"	2" ProPEX	2" ProPEX	1" ProPEX	0.55 lbs.

Installation

Properly mount the multi-port tee by securing all adjoining PEX pipes to framing or support structure within 6" of each ProPEX connection. For more information, refer to the Uponor Professional Plumbing Installation Guide.

Standards

ANSI/NSF 14 and 61; CAN/CSA B137.5; ASTM F877; ASTM F1960

Codes

IPC; UPC; NSPC; NPC of Canada

Listings

ICC ESR 1099; IAPMO 3946; HUD MR 1269

Related Applications

PEX-a Plumbing Systems

Contact Information

Uponor, Inc.
5925 148th Street West
Apple Valley, MN 55124 USA
Phone: 800.321.4739
Fax: 952.891.2008
www.uponorpro.com

Uponor Ltd.
2000 Argentia Rd., Plaza 1, Ste. 200
Mississauga, ON L5N 1W1 CANADA
Phone: 888.994.7726
Fax: 800.638.9517
www.uponorpro.com

¹ProPEX® is a registered trademark of Uponor, Inc. ProPEX™ is a trademark of Uponor Ltd.

ProPEX® Ball Valve

Submittal Information
Revision C: Jan. 7, 2014

Project Information

Job Name:

Location:

Part No. Ordered:

Engineer:

Date Submitted:

Contractor:

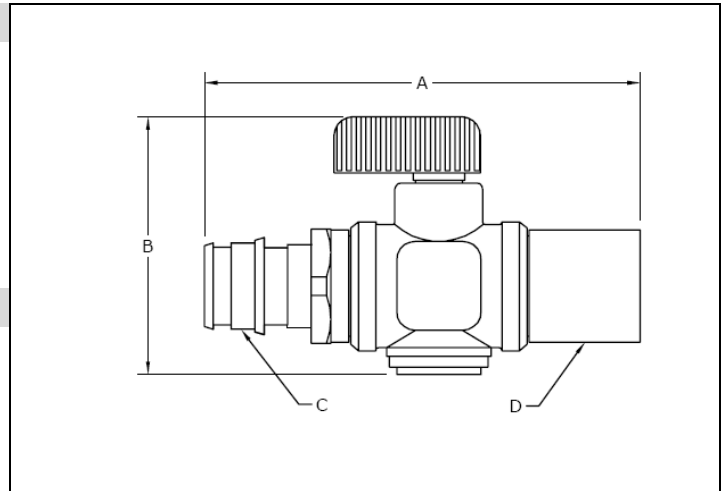
Submitted By:

Manufacturer's Representative:

Approved By:

Technical Data

Material: CA 360 Brass
Maximum Working Temperature: 250°F (121°C)
Maximum Working Pressure: 250 psi (17 bar)



Product Information and Application Use

The Uponor ProPEX® Ball Valve products include 3/4" copper adapters and feature in-line isolation valves.¹

✓ Description	Part Number	A	B	C	D	Weight
ProPEX Ball Valve, 5/8" PEX x 3/4" Copper Adapter	Q5806375	3.19"	1.81"	5/8"	3/4" Copper	0.50 lbs.
ProPEX Ball Valve, 3/4" PEX x 3/4" Copper Adapter	Q5807575	3.43"	1.67"	3/4"	3/4" Copper	0.50 lbs.

Installation

Install valve according to local building code. Do not dismantle. If soldering, aim flame away from fitting. For more information, refer to the Uponor Radiant Floor Installation Handbook.

Standards

ASME A112.18.1/CSA B125.1

Codes

IMC, UMC, NBC

Listings

ANSI/NSF 14, IAPMO file 3834

Related Applications

Radiant Heating and Cooling Systems
Snow and Ice Melting Systems
Permafrost Protection Systems
Turf Conditioning Systems

Contact Information

Uponor, Inc.
5925 148th Street West
Apple Valley, MN 55124 USA
Phone: 800.321.4739
Fax: 952.891.2008
www.uponorpro.com

Uponor Ltd.
2000 Argentia Rd., Plaza 1, Ste. 200
Mississauga, ON L5N 1W1 CANADA
Phone: 888.994.7726
Fax: 800.638.9517
www.uponorpro.com

¹ProPEX® is a registered trademark of Uponor, Inc. ProPEX™ is a trademark of Uponor Ltd.

ProPEX® Ball Valve

Submittal Information
Revision B: March 11, 2011

Project Information

Job Name:

Location:

Part No. Ordered:

Engineer:

Date Submitted:

Contractor:

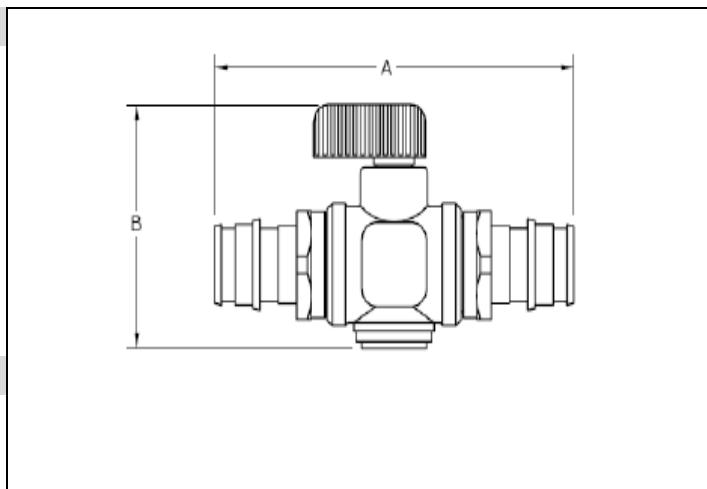
Submitted By:

Manufacturer's Representative:

Approved By:

Technical Data

Material:	CA 360 Brass
Maximum Temperature (no pressure):	250°F (121°C)
Maximum Working Pressure:	125 psi



Product Information and Application Use

The Uponor ProPEX® Ball Valve is used in plumbing and radiant heating applications.¹ Both ends are manufactured with the ProPEX fittings for making connections to Uponor AquaPEX® tubing or Wirsbo hePEX™ tubing.

✓ Description	Part Number	A	B	Weight
ProPEX Ball Valve (0.44" bore), 1/2" PEX x 1/2" PEX	Q4915050	2.80"	1.60"	0.30 lbs.
ProPEX Ball Valve (large bore), 3/4" PEX x 3/4" PEX	Q4917575	3.00"	2.00"	0.30 lbs.
ProPEX Valve (small bore), 1/2" PEX x 1/2" PEX	Q4945050	3.00"	2.00"	0.50 lbs.

Installation

Install valve according to local building code. Do not dismantle. Refer to the Uponor AquaPEX Professional Plumbing Installation Guide or the Uponor Radiant Installation Handbook for additional information.

Standards

CSA B137.5 and B125; ASTM F877; ASTM F1960

Codes

IPC; UPC; NSPC; NPC of Canada

Listings

ANSI/NSF 61/9

Related Applications

PEX-a Plumbing Systems
Radiant Heating and Cooling Systems

Contact Information

Uponor Ltd.
2000 Argentia Road, Plaza 1, Suite 200
Mississauga, ON L5N 1W1 CANADA
Phone: (888) 994-7726
Fax: (800) 638-9517
www.uponor.ca

¹ProPEX® is a registered trademark of Uponor, Inc. ProPEX™ is a trademark of Uponor Ltd.

ProPEX® Engineered Polymer (EP) Coupling

Submittal Information
Revision E: July 17, 2014

Project Information

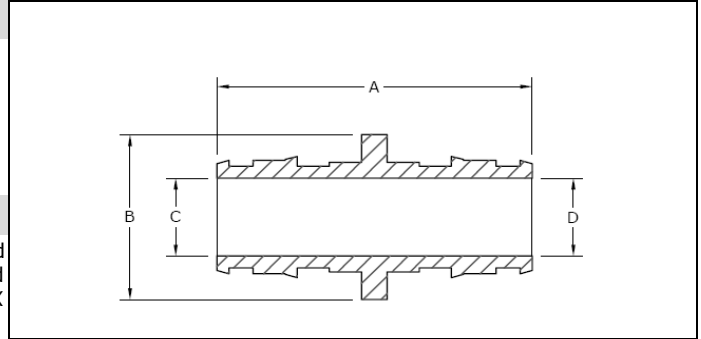
Job Name:	
Location:	Part No. Ordered:
Engineer:	Date Submitted:
Contractor:	Submitted By:
Manufacturer's Representative:	Approved By:

Technical Data

Material: UDEL® Polysulfone, 20% Glass-reinforced (3/8" - 1")
Acudel® Modified Polyphenylsulfone (1 1/4" - 1 1/2")
RADEL® R Polyphenylsulfone (2")

Max. Temp. (no pressure): 320°F (160°C)

Max. Working Temp./Pressure: 210°F (99°C) at 150 psi (1,034 kPa)



Product Information and Application Use

The ProPEX® Engineered Polymer (EP) Coupling is available for use in hot and cold domestic potable water distribution, residential fire safety and radiant heating and cooling systems. Each end of the coupling is manufactured with an Uponor ProPEX fitting for connections to Uponor AquaPEX® or Wirsbo hePEX™ tubing.

✓	Description	Part Number	A	B	C	D	Weight
	ProPEX EP Coupling, 3/8" PEX x 3/8" PEX	Q4773838	1.300"	0.70"	0.280"	0.280"	0.01 lbs.
	ProPEX EP Coupling, 1/2" PEX x 1/2" PEX	Q4775050	1.600"	0.85"	0.405"	0.405"	0.01 lbs.
	ProPEX EP Coupling, 1/2" PEX x 3/4" PEX	Q4775075	1.800"	1.08"	0.405"	0.615"	0.03 lbs.
	ProPEX EP Coupling, 5/8" PEX x 5/8" PEX	Q4776363	1.860"	1.00"	0.538"	0.538"	0.01 lbs.
	ProPEX EP Coupling, 3/4" PEX x 3/4" PEX	Q4777575	2.000"	1.18"	0.615"	0.615"	0.02 lbs.
	ProPEX EP Coupling, 3/4" PEX x 1" PEX	Q4777510	2.300"	1.34"	0.615"	0.818"	0.04 lbs.
	ProPEX EP Coupling, 1" PEX x 1" PEX	Q4771010	2.500"	1.42"	0.818"	0.818"	0.04 lbs.
	ProPEX EP Coupling, 1 1/4" PEX x 3/4" PEX	Q4771307	2.625"	1.75"	0.989"	0.615"	0.05 lbs.
	ProPEX EP Coupling, 1 1/4" PEX x 1" PEX	Q4771310	2.875"	1.75"	0.989"	0.818"	0.06 lbs.
	ProPEX EP Coupling, 1 1/4" PEX x 1 1/4" PEX	Q4771313	3.000"	1.75"	0.989"	0.989"	0.07 lbs.
	ProPEX EP Coupling, 1 1/2" PEX x 3/4" PEX	Q4771507	2.875"	2.13"	1.109"	0.615"	0.07 lbs.
	ProPEX EP Coupling, 1 1/2" PEX x 1" PEX	Q4771510	3.125"	2.13"	1.109"	0.818"	0.08 lbs.
	ProPEX EP Coupling, 1 1/2" PEX x 1 1/4" PEX	Q4771513	3.500"	2.13"	1.109"	0.989"	0.09 lbs.
	ProPEX EP Coupling, 1 1/2" PEX x 1 1/2" PEX	Q4771515	3.625"	2.13"	1.109"	1.109"	0.10 lbs.
	ProPEX EP Coupling, 2" PEX x 1 1/2" PEX	Q4772015	4.120"	2.20"	1.514"	1.109"	0.19 lbs.
	ProPEX EP Coupling, 2" PEX x 2" PEX	Q4772020	4.544"	2.20"	1.514"	1.514"	0.24 lbs.

Installation

Use ProPEX Rings to make the fitting. Refer to the Uponor Professional Plumbing Installation Guide, Radiant Floor Heating Installation Handbook or AquaSAFE™ Residential Fire Sprinkler Installation Guide for more information.

Standards

CAN/CSA B137.5; ASTM F877; ASTM F1960

Codes

IPC; UPC; NSPC; NPC of Canada

Listings

NSF U.P. CODE; ANSI/NSF 14- and 61-certified; HUD MR 1269; ICC ESR 1099; UL 1821 and ULC/ORD-C199P (except Q4773838 and Q4776363)

Related Applications

PEX-a Plumbing Systems
Hydronic Radiant Heating and Cooling Systems
Snow and Ice Melting Systems
Permafrost Protection Systems
Turf Conditioning Systems
AquaSAFE Fire Safety Systems

Contact Information

Uponor, Inc.
5925 148th Street West
Apple Valley, MN 55124 USA
Phone: (800) 321-4739
Fax: (952) 891-2008
www.uponorpro.com

Uponor Ltd.
2000 Argentia Rd., Plaza 1, Ste. 200
Mississauga, ON L5N 1W1 CANADA
Phone: (888) 994-7726
Fax: (800) 638-9517
www.uponorpro.com

ProPEX® Engineered Polymer (EP) Elbow

Submittal Information
Revision F: Oct. 31, 2013

Project Information

Job Name:

Location:

Part No. Ordered:

Engineer:

Date Submitted:

Contractor:

Submitted By:

Manufacturer's Representative:

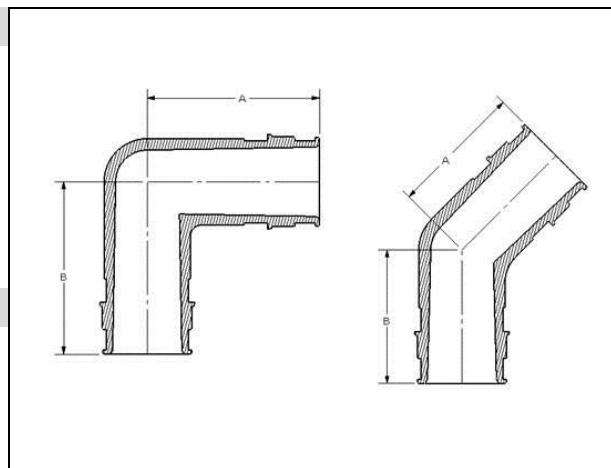
Approved By:

Technical Data

Material: UDEL® Polysulfone, 20% Glass-reinforced (½ to 1")
Acudel® Modified Polyphenylsulfone (1¼" to 1½")
Radel® R Polyphenylsulfone (2")

Maximum Temperature
(no pressure): 320°F (160°C)

Maximum Working
Temperature/Pressure: 210°F (99°C) at 150 psi (1,034 kPa)



Product Information and Application Use

The ProPEX® Engineered Polymer (EP) Elbow makes 90-degree connections for Uponor crosslinked polyethylene (PEX-a) tubing for use in hot and cold domestic potable water systems, residential fire safety and hydronic radiant heating and cooling systems. Each end of the elbow is manufactured with an Uponor ProPEX fitting for connections to Uponor AquaPEX® or Wirsbo hePEX™ tubing.¹

✓ Description	Part Number	A	B	Weight
ProPEX EP Elbow, ½" PEX x ½" PEX	Q4760500	1.30"	1.30"	0.02 lbs.
ProPEX EP Elbow, ¾" PEX x ¾" PEX	Q4760750	1.60"	1.60"	0.03 lbs.
ProPEX EP Elbow, 1" PEX x 1" PEX	Q4761000	2.10"	2.10"	0.07 lbs.
ProPEX EP Elbow, 1¼" PEX x 1¼" PEX	Q4761250	2.45"	2.45"	0.11 lbs.
ProPEX EP Elbow, 1½" PEX x 1½" PEX	Q4761500	2.77"	2.77"	0.18 lbs.
ProPEX EP Elbow, 2" PEX x 2" PEX	Q4762000	3.76"	3.76"	0.30 lbs.
ProPEX EP 45 Elbow, 1½" PEX x 1½" PEX	Q4761515	2.32"	2.32"	0.13 lbs.
ProPEX EP 45 Elbow, 2" PEX x 2" PEX	Q4762020	2.91"	2.91"	0.32 lbs.

Installation

Use the appropriate ProPEX Ring for PEX-a tubing. Refer to the Uponor AquaPEX® Professional Plumbing Installation Guide, AquaSAFE™ Residential Fire Sprinkler Installation Guide or Uponor Radiant Installation Handbook for additional information.

Standards

CAN/CSA B137.5; ASTM F877; ASTM F1960

Codes

IPC; UPC; NSPC; NPC of Canada

Listings

IAPMO 3558; ANSI/NSF 14- and 61-certified; HUD MR 1269; ICC ESR 1099; UL 1821; ULC/ORD-C199P

Related Applications

PEX-a Plumbing Systems
Hydronic Radiant Heating and Cooling Systems
Snow Melting Systems
Turf Conditioning Systems
Permafrost Prevention Systems
AquaSAFE Fire Safety Systems

Contact Information

Uponor, Inc.
5925 148th Street West
Apple Valley, MN 55124 USA
Phone: (800) 321-4739
Fax: (952) 891-2008
www.uponorpro.com

Uponor Ltd.
2000 Argentia Road, Plaza 1, Suite 200
Mississauga, ON L5N 1W1 CANADA
Phone: (888) 994-7726
Fax: (800) 638-9517
www.uponorpro.com

¹ProPEX® is a registered trademark of Uponor, Inc. ProPEX™ is a trademark of Uponor Ltd.

ProPEX® Engineered Polymer (EP) Tee

Submittal Information
Revision D: June 8, 2012

Project Information

Job Name:

Location:

Part No. Ordered:

Engineer:

Date Submitted:

Contractor:

Submitted By:

Manufacturer's Representative:

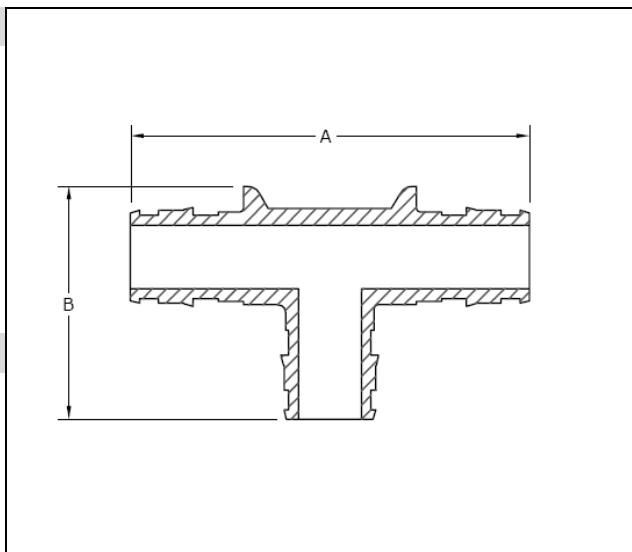
Approved By:

Technical Data

Material: UDEL® Polysulfone, 20% Glass-reinforced (½" to 1")
Acudel® Modified Polyphenylsulfone (1¼" to 1½")
Radel® Polyphenylsulfone (2")

Maximum Temperature (no pressure): 320°F (160°C)

Maximum Working Temperature/Pressure: 210°F (99°C) at 150 psi (1,034 kPa)



Product Information and Application Use

The ProPEX® Engineered Polymer (EP) Tee makes diverting connections for Uponor crosslinked polyethylene (PEX-a) tubing for use in hot and cold domestic potable water systems, residential fire sprinkler systems and hydronic radiant heating and cooling systems. Each end of the tee is manufactured with an Uponor ProPEX fitting for connections to Uponor AquaPEX® or Wirsbo hePEX™ tubing.¹

Note: Branch size is listed last in the part descriptions.

✓ Description	Part Number	A	B	Weight
ProPEX EP Tee, ½" PEX x ½" PEX x ½" PEX	Q4755050	2.50"	1.53"	0.02 lbs.
ProPEX EP Tee, ¾" PEX x ¾" PEX x ¾" PEX	Q4757575	3.30"	1.94"	0.05 lbs.
ProPEX EP Tee, 1" PEX x 1" PEX x 1" PEX	Q4751010	4.10"	2.47"	0.07 lbs.
ProPEX EP Tee, 1¼" PEX x 1¼" PEX x 1¼" PEX	Q4751313	4.80"	3.22"	0.15 lbs.
ProPEX EP Tee, 1½" PEX x 1½" PEX x 1½" PEX	Q4751515	5.80"	3.82"	0.25 lbs.
ProPEX EP Tee, 2" PEX x 2" PEX x 2" PEX	Q4752000	7.45"	4.79"	0.38 lbs.

Installation

Use the appropriate ProPEX Ring for PEX-a tubing. Refer to the Uponor AquaPEX® Professional Plumbing Installation Guide, AquaSAFE™ Residential Fire Sprinkler Installation Guide or Uponor Radiant Installation Handbook for additional information.

Standards

CAN/CSA B137.5; ASTM F877; ASTM F1960

Codes

IPC; UPC; NSPC; NPC of Canada

Listings

IAPMO 3558; ANSI/NSF 14- and 61-certified; HUD MR 1269; ICC ESR 1099; UL 1821; ULC/ORD-C199P

Related Applications

PEX-a Plumbing Systems
Hydronic Radiant Heating and Cooling Systems
Snow Melting Systems
Turf Conditioning Systems
Permafrost Prevention Systems
AquaSAFE Fire Safety Systems

Contact Information

Uponor, Inc.
5925 148th Street West
Apple Valley, MN 55124 USA
Phone: (800) 321-4739
Fax: (952) 891-2008
www.uponorpro.com

Uponor Ltd.
2000 Argenta Road, Plaza 1, Suite 200
Mississauga, ON L5N 1W1 CANADA
Phone: (888) 994-7726
Fax: (800) 638-9517
www.uponorpro.com

¹ProPEX® is a registered trademark of Uponor, Inc. ProPEX™ is a trademark of Uponor Ltd.

ProPEX® Engineered Polymer (EP) Reducing Tee



Submittal Information

Revision D: March 21, 2013

Project Information

Job Name:

Location:

Part No. Ordered:

Engineer:

Date Submitted:

Contractor:

Submitted By:

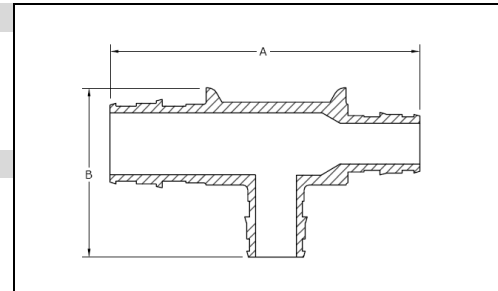
Manufacturer's Representative:

Approved By:

Technical Data

Material: UDEL® Polysulfone, 20% Glass-reinforced (½ to 1")
 Acudel® Modified Polyphenylsulfone (1¼" to 1½")
 Radel® R Polyphenylsulfone (2")

Maximum Temperature (no pressure): 320°F (160°C)
 Max. Working Temperature/Pressure: 210°F (99°C) at 150 psi (1,034 kPa)



Product Information and Application Use

The ProPEX® Engineered Polymer (EP) Reducing Tee makes diverting connections for Uponor crosslinked polyethylene (PEX-a) tubing for use in hot and cold domestic potable water systems, residential fire sprinkler systems and hydronic radiant heating and cooling systems. Each end of the tee is manufactured with an Uponor ProPEX fitting for connections to Uponor AquaPEX® or Wirsbo hePEX™ tubing.¹ **Note:** Branch size is listed last in the part descriptions.

Description	Part Number	Length (A)	Height (B)	Weight
ProPEX EP Reducing Tee, ½" PEX x ½" PEX x ¾" PEX	Q4755575	2.86"	1.76"	0.03 lbs.
ProPEX EP Reducing Tee, ¾" PEX x ½" PEX x ½" PEX	Q4757555	3.10"	1.70"	0.04 lbs.
ProPEX EP Reducing Tee, ¾" PEX x ½" PEX x ¾" PEX	Q4757557	3.10"	1.94"	0.04 lbs.
ProPEX EP Reducing Tee, ¾" PEX x ¾" PEX x ⅝" PEX	Q4757563	3.30"	1.85"	0.05 lbs.
ProPEX EP Reducing Tee, ¾" PEX x ¾" PEX x ½" PEX	Q4757550	3.30"	1.70"	0.04 lbs.
ProPEX EP Reducing Tee, ¾" PEX x ¾" PEX x 1" PEX	Q4757710	3.64"	2.32"	0.08 lbs.
ProPEX EP Reducing Tee, 1" PEX x ¾" PEX x ¾" PEX	Q4751775	3.90"	2.24"	0.08 lbs.
ProPEX EP Reducing Tee, 1" PEX x ¾" PEX x 1" PEX	Q4751751	3.90"	2.47"	0.08 lbs.
ProPEX EP Reducing Tee, 1" PEX x 1" PEX x ½" PEX	Q4751150	4.10"	2.00"	0.08 lbs.
ProPEX EP Reducing Tee, 1" PEX x 1" PEX x ¾" PEX	Q4751175	4.10"	2.24"	0.09 lbs.
ProPEX EP Reducing Tee, 1¼" PEX x 1" PEX x ¾" PEX	Q4751317	4.60"	2.73"	0.11 lbs.
ProPEX EP Reducing Tee, 1¼" PEX x 1" PEX x 1" PEX	Q4751311	4.60"	2.97"	0.12 lbs.
ProPEX EP Reducing Tee, 1¼" PEX x 1¼" PEX x ½" PEX	Q4751350	4.40"	2.15"	0.10 lbs.
ProPEX EP Reducing Tee, 1¼" PEX x 1¼" PEX x ¾" PEX	Q4751337	4.80"	2.73"	0.13 lbs.
ProPEX EP Reducing Tee, 1¼" PEX x 1¼" PEX x 1" PEX	Q4751331	4.80"	2.97"	0.14 lbs.
ProPEX EP Reducing Tee, 1½" PEX x 1" PEX x ¾" PEX	Q4751517	5.25"	3.06"	0.17 lbs.
ProPEX EP Reducing Tee, 1½" PEX x 1" PEX x 1" PEX	Q4751511	5.25"	3.30"	0.18 lbs.
ProPEX EP Reducing Tee, 1½" PEX x 1" PEX x 1½" PEX	Q4751505	5.40"	3.45"	0.20 lbs.
ProPEX EP Reducing Tee, 1½" PEX x 1¼" PEX x ¾" PEX	Q4751537	5.50"	2.65"	0.18 lbs.
ProPEX EP Reducing Tee, 1½" PEX x 1¼" PEX x 1" PEX	Q4751531	5.50"	2.85"	0.19 lbs.
ProPEX EP Reducing Tee, 1½" PEX x 1¼" PEX x 1¼" PEX	Q4751533	5.50"	3.15"	0.21 lbs.
ProPEX EP Reducing Tee, 1½" PEX x 1½" PEX x ½" PEX	Q4751550	4.95"	2.30"	0.14 lbs.
ProPEX EP Reducing Tee, 1½" PEX x 1½" PEX x ¾" PEX	Q4751557	5.80"	3.06"	0.20 lbs.
ProPEX EP Reducing Tee, 1½" PEX x 1½" PEX x 1" PEX	Q4751551	5.75"	3.30"	0.21 lbs.
ProPEX EP Reducing Tee, 1½" PEX x 1½" PEX x 1¼" PEX	Q4751553	5.80"	3.56"	0.22 lbs.
ProPEX EP Reducing Tee, 2" PEX x 1½" PEX x ¾" PEX	Q4752575	6.62"	3.30"	0.30 lbs.
ProPEX EP Reducing Tee, 2" PEX x 1½" PEX x 1" PEX	Q4752051	6.50"	3.40"	0.30 lbs.
ProPEX EP Reducing Tee, 2" PEX x 1½" PEX x 1¼" PEX	Q4752053	6.62"	3.80"	0.34 lbs.
ProPEX EP Reducing Tee, 2" PEX x 1½" PEX x 1½" PEX	Q4752055	6.62"	4.10"	0.35 lbs.
ProPEX EP Reducing Tee, 2" PEX x 1½" PEX x 2" PEX	Q4752152	7.40"	4.25"	0.42 lbs.
ProPEX EP Reducing Tee, 2" PEX x 2" PEX x ½" PEX	Q4752250	5.80"	2.80"	0.28 lbs.
ProPEX EP Reducing Tee, 2" PEX x 2" PEX x ¾" PEX	Q4752275	6.93"	3.30"	0.34 lbs.
ProPEX EP Reducing Tee, 2" PEX x 2" PEX x 1" PEX	Q4752210	6.93"	3.40"	0.36 lbs.
ProPEX EP Reducing Tee, 2" PEX x 2" PEX x 1¼" PEX	Q4752213	6.62"	3.80"	0.37 lbs.
ProPEX EP Reducing Tee, 2" PEX x 2" PEX x 1½" PEX	Q4752215	7.13"	4.10"	0.44 lbs.

Installation

Use the appropriate ProPEX Ring for PEX-a tubing. Refer to the Uponor AquaPEX® Professional Plumbing Installation Guide, AquaSAFE™ Residential Fire Sprinkler Installation Guide or Uponor Radiant Installation Handbook for additional information.

Standards

CAN/CSA B137.5; ASTM F877; ASTM F1960

Codes

IPC; UPC; NSPC; NPC of Canada

Listings

NSF U.P. CODE; ANSI/NSF 14- and 61-certified; HUD MR 1269; ICC ESR 1099; UL 1821 and ULC/ORD-C199P (except Q4757563)

Related Applications

PEX-a Plumbing Systems
 Hydronic Radiant Heating and Cooling Systems
 Snow and Ice Melting Systems
 Turf Conditioning Systems
 Permafrost Protection Systems
 AquaSAFE Fire Safety Systems

Contact Information

Uponor, Inc.
 5925 148th Street West
 Apple Valley, MN 55124 USA
 Phone: (800) 321-4739
 Fax: (952) 891-2008
 www.uponorpro.com

Uponor Ltd.
 2000 Argentia Rd., Plaza 1, Ste. 200
 Mississauga, ON L5N 1W1 CANADA
 Phone: (888) 994-7726
 Fax: (800) 638-9517
 www.uponorpro.com

¹ProPEX® is a registered trademark of Uponor, Inc. ProPEX™ is a trademark of Uponor Ltd.

ProPEX® Ring

Submittal Information
Revision E: May 29, 2013

Project Information

Job Name:

Location:

Part No. Ordered:

Engineer:

Date Submitted:

Contractor:

Submitted By:

Manufacturer's Representative:

Approved By:

Technical Data

Material: Engel-method Crosslinked Polyethylene (PEX-a)

Density: 926 to 940 kg/m³

Degree of crosslinking: 70% to 89%



Product Information and Application Use

Manufactured from PEX-a material, Uponor ProPEX® Rings are required to make a proper ProPEX connection.¹ The ProPEX Ring with Stop includes a leading edge chamfer and stop edge.

✓ Description	Part Number	Length	I.D.	O.D.	Weight
ProPEX Ring, 3/8"	Q4690302	0.54"	0.49"	0.74"	0.005 lbs.
ProPEX Ring with Stop, 1/2"	Q4690512	0.63"	0.63"	0.87"	0.006 lbs.
ProPEX Ring with Stop, 5/8"	Q4690625	0.79"	0.75"	1.00"	0.008 lbs.
ProPEX Ring with Stop, 3/4"	Q4690756	0.87"	0.88"	1.13"	0.012 lbs.
ProPEX Ring with Stop, 1"	Q4691000	1.10"	1.13"	1.42"	0.020 lbs.
ProPEX Ring with Stop, 1 1/4"	Q4691250	1.35"	1.38"	1.66"	0.030 lbs.
ProPEX Ring with Stop, 1 1/2"	Q4691500	1.61"	1.63"	1.91"	0.040 lbs.
ProPEX Ring with Stop, 2"	Q4692000	1.97"	2.14"	2.61"	0.133 lbs.

Installation

Square cut the Uponor ProPEX tubing. Remove excess material. Slide the ProPEX Ring over the end of the tubing (maximum 1/16" over-hang for rings without stop). When using the ProPEX Ring with Stop, slide the ring on the tubing with the chamfered edge first until the end of the tubing contacts the stop edge. Expand the tubing and ring. If using the ProPEX Manual Expander Tool, rotate the tool a quarter turn after each expansion to prevent the formation of grooves. Remove the expansion tool and fully seat the tubing and ring against the shoulder of the fitting. Make ProPEX connections at temperatures above 5°F/-15°C. For more information, refer to the AquaPEX® Professional Plumbing Installation Handbook, the AquaSAFE™ Fire Safety Installation Guide or the Uponor Radiant Installation Handbook.

Listings²

cNSFus-fs³; cNSFus-pw; cNSFus-rfh; cQAIus; UL; CSA; WH; ETL; PPI TR-4; ICC-ES; IAPMO; BMEC; CCMC

Codes

ICC; IPC; IMC; IRC; UPC; UMC; NSPC; HUD; UFGS; NPC of Canada; NBC of Canada

Standards

ANSI/NSF 14; ANSI/NSF 61; ASTM F876; ASTM F877; ASTM F1960; ASTM F2023; ASTM E84; CAN/ULC S102.2; ASTM E119/UL 263; CAN/ULC S101; ASTM E814/ULC S115; AWWA C904⁴; CSA B137.5; CSA B214; UL 1821³; ULC/ORD-C199P³

Related Applications

PEX-a Plumbing Systems
Radiant Heating and Cooling Systems
AquaSAFE Fire Safety Systems

Contact Information

Uponor, Inc.
5925 148th Street West
Apple Valley, MN 55124 USA
Phone: 800.321.4739
Fax: 952.891.2008
www.uponorpro.com

Uponor Ltd.
2000 Argentia Road, Plaza 1, Suite 200
Mississauga, ON L5N 1W1 CANADA
Phone: 888.994.7726
Fax: 800.638.9517
www.uponorpro.com

¹ProPEX® is a registered trademark of Uponor, Inc. ProPEX™ is a trademark of Uponor Ltd.

²Visit listing agency's website for complete information; ³For 1/2", 3/4", 1", 1 1/4", 1 1/2" and 2" tubing only; ⁴For 3/4" tubing and larger.

ProPEX® Engineered Plastic (EP) Plug

Submittal Information
Revision D: May 22, 2014

Project Information

Job Name:

Location:

Part No. Ordered:

Engineer:

Date Submitted:

Contractor:

Submitted By:

Manufacturer's Representative:

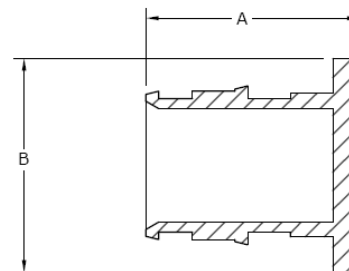
Approved By:

Technical Data

Material: UDEL® Polysulfone, 20% Glass-reinforced (½" - 1");
Acudel® modified polyphenylsulfone (1¼" - 2")

Maximum Temperature
(no pressure): 320°F (160°C)

Maximum Working
Temperature/Pressure: 210°F (99°C) at 150 psi (1,034 kPa)



Product Information and Application Use

ProPEX® Engineered Plastic (EP) Plugs terminate Uponor crosslinked polyethylene (PEX-a) tubing ends and are available for use in hot and cold domestic potable water systems, residential fire sprinkler systems and hydronic heating and cooling systems.¹

✓ Description	Part Number	A	B	Weight
ProPEX EP Plug for ½" PEX	Q4350500	0.85"	0.870"	0.006 lbs.
ProPEX EP Plug for ¾" PEX	Q4350750	1.08"	1.187"	0.008 lbs.
ProPEX EP Plug for 1" PEX	Q4351000	1.32"	1.350"	0.020 lbs.
ProPEX EP Plug for 1¼" PEX	Q4351250	1.65"	1.720"	0.040 lbs.
ProPEX EP Plug for 1½" PEX	Q4351500	1.91"	2.040"	0.075 lbs.
ProPEX EP Plug for 2" PEX	Q4352000	2.36"	2.620"	0.156 lbs.

Installation

Use the appropriate ProPEX Ring for PEX-a tubing. Refer to the Uponor AquaPEX® Professional Plumbing Installation Guide, AquaSAFE™ Residential Fire Sprinkler Installation Guide or Uponor Radiant Installation Handbook for additional information.

Standards

CAN/CSA B137.5; ASTM F877; ASTM F1960

Codes

IPC; UPC; NSPC; NPC of Canada

Listings

IAPMO 3558; ANSI/NSF 14- and 61-certified; HUD MR 1269; ICC ESR 1099; UL 1821; ULC/ORD-C199P

Related Applications

PEX-a Plumbing Systems
Hydronic Radiant Heating and Cooling Systems
Snow Melting Systems
Turf Conditioning Systems
Permafrost Prevention Systems
AquaSAFE™ Fire Safety Systems

Contact Information

Uponor, Inc.
5925 148th Street West
Apple Valley, MN 55124 USA
Phone: (800) 321-4739
Fax: (952) 891-2008
www.uponorpro.com

Uponor Ltd.
2000 Argentia Rd., Plaza 1, Ste. 200
Mississauga, ON L5N 1W1 CANADA
Phone: (888) 994-7726
Fax: (800) 638-9517
www.uponorpro.com

¹ProPEX® is a registered trademark of Uponor, Inc. ProPEX™ is a trademark of Uponor Ltd.

Commercial Engineered Polymer (EP) Flow-through Multi-port Tee

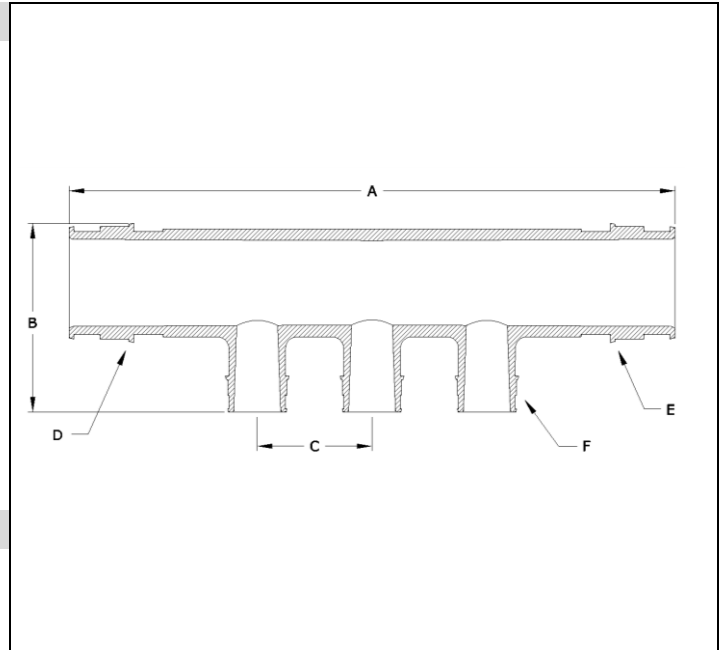
Submittal Information
Revision B: March 19, 2014

Project Information

Job Name:	
Location:	Part No. Ordered:
Engineer:	Date Submitted:
Contractor:	Submitted By:
Manufacturer's Representative:	Approved By:

Technical Data

Material:	
1 1/4" Tee:	Acudel® Modified Polyphenylsulfone
2" Tee:	Radel® R Polyphenylsulfone
Maximum Temperature (no pressure):	320°F (160°C)
Maximum Working Temperature/Pressure:	210°F (99°C) at 150 psi
Maximum Flow for 3/4" Outlet:	8.8 gpm at 8 fps 13.2 gpm at 12 fps
Maximum Flow for 1" Outlet:	14.5 gpm at 8 fps 21.8 gpm at 12 fps
Maximum Flow for 1 1/4" Inlet:	21.7 gpm at 8 fps 32.6 gpm at 12 fps
Maximum Flow for 2" Inlet:	51.9 gpm at 8 fps 77.9 gpm at 12 fps



Product Information and Application Use

Commercial EP Flow-through Multi-port Tee features 1 1/4" or 2" ProPEX® inlets with 3/4" or 1" ProPEX branch outlets for use with crosslinked polyethylene (PEX) piping.¹ The tee is made of engineered polymer (EP), a high-performance material used in demanding, hot-water applications.

✓ Description	Part Number	A	B	C	D	E	F	Weight
EP Flow-through Multi-port Tee, 3 (3/4") outlets, 1 1/4" x 1 1/4" ProPEX	Q2231373	8.2"	2.3"	1.75"	1 1/4" ProPEX	1 1/4" ProPEX	3/4" ProPEX	0.22 lbs.
EP Flow-through Multi-port Tee, 3 (1") outlets, 2" x 2" ProPEX	Q2232102	10.6"	3.3"	2"	2" ProPEX	2" ProPEX	1" ProPEX	0.55 lbs.

Installation

Properly mount the multi-port tee by securing all adjoining PEX pipes to the framing or support structure within 6" of each ProPEX connection. For more information, refer to the Uponor Professional Plumbing Installation Guide.

Standards

ANSI/NSF 14 and 61; CAN/CSA B137.5; ASTM F877; ASTM F1960

Codes

IPC; UPC; NSPC; NPC of Canada

Listings

ICC ESR 1099; IAPMO 3946; HUD MR 1269

Related Applications

PEX-a Plumbing Systems

Contact Information

Uponor, Inc.
5925 148th Street West
Apple Valley, MN 55124 USA
Phone: 800.321.4739
Fax: 952.891.2008
www.uponorpro.com

Uponor Ltd.
2000 Argentia Rd., Plaza 1, Ste. 200
Mississauga, ON L5N 1W1 CANADA
Phone: 888.994.7726
Fax: 800.638.9517
www.uponorpro.com

¹ProPEX® is a registered trademark of Uponor, Inc. ProPEX™ is a trademark of Uponor Ltd.

ProPEX® Engineered Plastic (EP) Valves

Submittal Information
Revision B: June 7, 2010

Project Information

Job Name:

Location:

Part No. Ordered:

Engineer:

Date Submitted:

Contractor:

Submitted By:

Manufacturer's Representative:

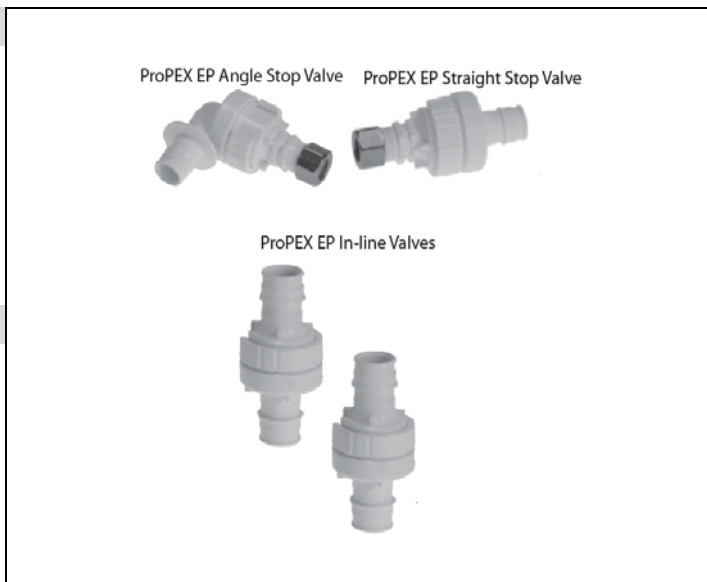
Approved By:

Technical Data

Material:	Acudel® modified polyphenylsulfone; Ceramics
Maximum Temperature (no pressure):	320°F (160°C)
Maximum Working Temperature/Pressure:	210°F at 150 psi (99°C at 10.3 bar)

Product Information and Application Use

ProPEX® Engineered Plastic (EP) Valves are ideal for PEX-to-PEX and point-of-use shutoff at the fixture.¹ ProPEX EP Valves resist chemical and mineral buildup, along with corrosion, pitting and scaling. Angle and Straight Stop Valves connect ½" Uponor AquaPEX® tubing to ¾" O.D. risers, and In-line Valves connect ½" and ¾" Uponor AquaPEX tubing.



✓	Description	Part Number	Length	Height	Width	Weight
	ProPEX EP Angle Stop Valve for ½" PEX	Q4905038	2.70"	2.20"	1.50"	0.09 lbs.
	ProPEX EP Straight Stop Valve for ½" PEX	Q4935038	2.80"	1.50"	1.50"	0.09 lbs.
	ProPEX EP In-line Valve, ½" PEX x ½" PEX	Q4905050	2.60"	1.50"	1.50"	0.07 lbs.
	ProPEX EP In-line Valve, ¾" PEX x ¾" PEX	Q4837575	3.20"	1.70"	1.70"	0.11 lbs.

Installation

Install valve according to installation instructions, along with your local building code. Do not dismantle ProPEX EP Valves. Refer to the Uponor Professional Plumbing Installation Guide for additional information.

Standards

CSA B125.3; ASTM F1960; ASME A112.18.1

Codes

IPC; NSPC; NPC of Canada; UPC

Listings

ANSI/NSF 61/9-certified; cNSFus-PW PEX; U.P. Code

Related Applications

PEX-a Plumbing Systems

Contact Information

Uponor, Inc.
5925 148th Street West
Apple Valley, MN 55124 USA
Phone: (800) 321-4739
Fax: (952) 891-2008
www.uponor-usa.com

Uponor Ltd.
655 Park Street
Regina, SK S4N 5N1 CANADA
Phone: (888) 994-7726
Fax: (800) 638-9517
www.uponor.ca

¹ProPEX® is a registered trademark of Uponor, Inc. ProPEX™ is a trademark of Uponor Ltd.

Engineered Polymer (EP) Flow-through Opposing-port Multi-port Tee

Submittal Information
Revision B: Oct. 10, 2013

Project Information

Job Name:

Location:

Part No. Ordered:

Engineer:

Date Submitted:

Contractor:

Submitted By:

Manufacturer's Representative:

Approved By:

Technical Data

Material:	UDEL GF120
Maximum Temperature (no pressure):	320°F (160°C)
Maximum Working Temperature/Pressure:	210°F (99°C) at 150 psi
Maximum Multi-port Tee Flow for ¾" Inlet:	13.2 gpm at 12 fps 8.8 gpm at 8 fps



Product Information and Application Use

Engineered Polymer (EP) Flow-through Opposing-port Multi-port Tee features ¾" ProPEX® inlets with opposing ½" ProPEX branch outlets.¹ The tee is designed for central location to facilitate piping in two directions. The tee is made of engineered polymer, which is proven in demanding hot-water applications.

✓ Description	Part Number	Length	Height	Width	Weight
EP Flow-through Opposing-port Multi-port Tee, 3 outlets, ¾" x ¾" ProPEX	Q2337557	4.41"	2.38"	1.18"	0.072 lbs.
EP Flow-through Opposing-port Multi-port Tee, 4 outlets, ¾" x ¾" ProPEX	Q2347557	4.41"	2.38"	1.18"	0.077 lbs.
EP Flow-through Opposing-port Multi-port Tee, 6 outlets, ¾" x ¾" ProPEX	Q2367557	5.66"	2.38"	1.18"	0.108 lbs.

Installation

Use any product designed to mount 1" copper pipe as a mounting bracket. For more information, refer to the Uponor AquaPEX® Professional Plumbing Installation Guide.

Standards

CAN/CSA B137.5; ASTM F877; ASTM F1960

Codes

IPC; UPC; NSPC; NPC of Canada

Listings

ANSI/NSF 14- and 61-certified; ICC ESR 1099; IAPMO 3946

Related Applications

PEX-a Plumbing Systems

Contact Information

Uponor, Inc.
5925 148th Street West
Apple Valley, MN 55124 USA
Phone: 800.321.4739
Fax: 952.891.2008
www.uponorpro.com

Uponor Ltd.
2000 Argentia Road, Plaza 1, Suite 200
Mississauga, ON L5N 1W1 CANADA
Phone: 888.994.7726
Fax: 800.638.9517
www.uponorpro.com

¹ProPEX® is a registered trademark of Uponor, Inc. ProPEX™ is a trademark of Uponor Ltd.

Engineered Polymer (EP) Branch Opposing-port Multi-port Tee

Submittal Information
Revision B: Oct. 10, 2013

Project Information

Job Name:

Location:

Part No. Ordered:

Engineer:

Date Submitted:

Contractor:

Submitted By:

Manufacturer's Representative:

Approved By:

Technical Data

Material:	UDEL GF120
Maximum Temperature (no pressure):	320°F (160°C)
Maximum Working Temperature/Pressure:	210°F (99°C) at 150 psi
Maximum Multi-port Tee Flow for 3/4" Inlet:	13.2 gpm at 12 fps 8.8 gpm at 8 fps



Product Information and Application Use

Engineered Polymer (EP) Branch Opposing-port Multi-port Tee features a 3/4" ProPEX® inlet with opposing 1/2" ProPEX branch outlets.¹ These are designed for central location to facilitate piping in two directions. The tee is made of EP, which is proven in demanding hot-water applications.

✓ Description	Part Number	Length	Height	Width	Weight
3/4" EP Branch Opposing-port Multi-port Tee, 3 outlets	Q2337550	3.58"	2.38"	1.18"	0.066 lbs.
3/4" EP Branch Opposing-port Multi-port Tee, 4 outlets	Q2347550	3.58"	2.38"	1.18"	0.071 lbs.
3/4" EP Branch Opposing-port Multi-port Tee, 8 outlets	Q2387550	6.08"	2.38"	1.18"	0.135 lbs.

Installation

Use any product designed to mount 1" copper pipe as a mounting bracket. For more information, refer to the Uponor AquaPEX® Professional Plumbing Installation Guide.

Standards

CAN/CSA B137.5; ASTM F877; ASTM F1960

Codes

IPC; UPC; NSPC; NPC of Canada

Listings

ANSI/NSF 14- and 61-certified; ICC ESR 1099; IAPMO 3946

Related Applications

PEX-a Plumbing Systems

Contact Information

Uponor, Inc.
5925 148th Street West
Apple Valley, MN 55124 USA
Phone: 800.321.4739
Fax: 952.891.2008
www.uponorpro.com

Uponor Ltd.
2000 Argentia Road, Plaza 1, Suite 200
Mississauga, ON L5N 1W1 CANADA
Phone: 888.994.7726
Fax: 800.638.9517
www.uponorpro.com

¹ProPEX® is a registered trademark of Uponor, Inc. ProPEX™ is a trademark of Uponor Ltd.

Engineered Polymer (EP) Flow-through Multi-port Tee

Submittal Information
Revision D: Oct. 9, 2013

Project Information

Job Name:

Location:

Part No. Ordered:

Engineer:

Date Submitted:

Contractor:

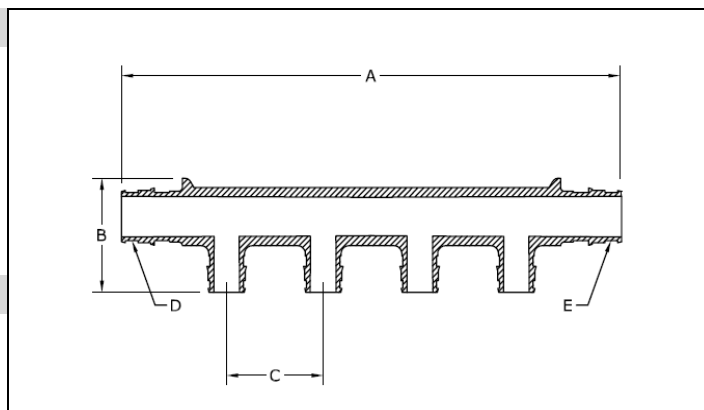
Submitted By:

Manufacturer's Representative:

Approved By:

Technical Data

Material:	UDEL GF120
Maximum Temperature (no pressure):	320°F (160°C)
Maximum Working Temperature/Pressure:	210°F (99°C) at 150 psi
Maximum Multi-port Tee Flow for ¾" Inlet:	13.2 gpm at 12 fps 8.8 gpm at 8 fps
Maximum Multi-port Tee Flow for 1" Inlet:	21.8 gpm at 12 fps 14.5 gpm at 8 fps



Product Information and Application Use

Engineered Polymer (EP) Flow-through Multi-port Tee features ¾" or 1" ProPEX® inlets with ½" ProPEX branch outlets.¹ The tee is made of EP, a high-performance material used in demanding, hot-water applications.

✓ Description	Part Number	A	B	C	D	E	Weight
EP Flow-through Multi-port Tee, 2 outlets, ¾" x ¾" ProPEX	Q2227557	4.40"	1.77"	1.25"	¾" ProPEX	¾" ProPEX	0.08 lbs.
EP Flow-through Multi-port Tee, 3 outlets, ¾" x ¾" ProPEX	Q2237557	5.70"	1.77"	1.25"	¾" ProPEX	¾" ProPEX	0.10 lbs.
EP Flow-through Multi-port Tee, 3 outlets, 1" x ¾" ProPEX	Q2231057	6.20"	1.88"	1.25"	1" ProPEX	¾" ProPEX	0.14 lbs.
EP Flow-through Multi-port Tee, 4 outlets, ¾" x ¾" ProPEX	Q2247557	7.80"	1.77"	1.50"	¾" ProPEX	¾" ProPEX	0.14 lbs.
EP Flow-through Multi-port Tee, 4 outlets, 1" x ¾" ProPEX	Q2241057	7.10"	2.00"	1.25"	1" ProPEX	¾" ProPEX	0.17 lbs.
EP Flow-through Multi-port Tee, 4 outlets, 1" x 1" ProPEX	Q2241051	7.68"	1.88"	1.25"	1" ProPEX	1" ProPEX	0.18 lbs.
EP Flow-through Multi-port Tee, 6 outlets, ¾" x ¾" ProPEX	Q2267557	9.41"	1.62"	1.25"	¾" ProPEX	¾" ProPEX	0.18 lbs.
EP Flow-through Multi-port Tee, 6 outlets, 1" x ¾" ProPEX	Q2261057	9.60"	2.00"	1.25"	1" ProPEX	¾" ProPEX	0.24 lbs.
EP Flow-through Multi-port Tee, 6 outlets, 1" x 1" ProPEX	Q2261051	9.90"	2.00"	1.25"	1" ProPEX	1" ProPEX	0.25 lbs.

Installation

Any product designed to mount 1" copper pipe (for the ¾" EP Flow-through Multi-port Tee) or 1¼" copper pipe (for the 1" EP Flow-through Multi-port Tee) can serve as a mounting bracket. For more information, refer to the Uponor Professional Plumbing Installation Guide.

Standards

CAN/CSA B137.5; ASTM F877; ASTM F1960

Codes

IPC; UPC; NSPC; NPC of Canada

Listings

ANSI/NSF -14- and 61-certified; ICC ESR 1099; IAPMO 3946; HUD MR 1269

Related Applications

PEX-a Plumbing Systems

Contact Information

Uponor, Inc.
5925 148th Street West
Apple Valley, MN 55124 USA
Phone: (800) 321-4739
Fax: (952) 891-2008
www.uponorpro.com

Uponor Ltd.
655 Park Street
Regina, SK S4N 5N1 CANADA
Phone: (888) 994-7726
Fax: (800) 638-9517
www.uponorpro.com

¹ProPEX® is a registered trademark of Uponor, Inc. ProPEX™ is a trademark of Uponor Ltd.

Engineered Polymer (EP) Flow-through Vertical Multi-port Tee

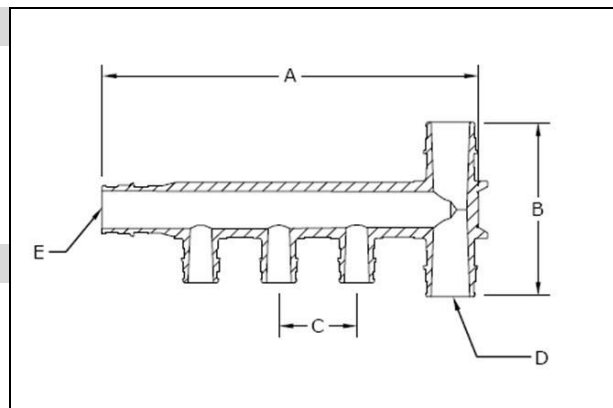
Submittal Information
Revision C: Oct. 9, 2013

Project Information

Job Name:	
Location:	Part No. Ordered:
Engineer:	Date Submitted:
Contractor:	Submitted By:
Manufacturer's Representative:	Approved By:

Technical Data

Material:	UDELM [®] Polysulfone GF120
Maximum Temperature (no pressure):	320°F (160°C)
Maximum Working Temperature/Pressure:	210°F at 150 psi (99°C at 10.3 bar)
Maximum Multi-port Tee Flow for 3/4" Inlet:	13.2 gpm at 12 fps 8.8 gpm at 8 fps



Product Information and Application Use

Engineered Polymer (EP) Flow-through Vertical Multi-port Tee is designed for use in hot and cold domestic potable water distribution systems. The EP Flow-through Vertical Multi-port Tee features 3/4" ProPEX[®] inlets and 1/2" ProPEX outlets.¹

✓ Description	Part Number	A	B	C	D	E	Weight
EP Flow-through Multi-port Vertical Tee, 3 outlets, 3/4" x 3/4" x 3/4" ProPEX	Q2237757	6.03"	2.85"	1.25"	0.75" ProPEX	0.75" ProPEX	0.12 lbs.
EP Flow-through Multi-port Vertical Tee, 4 outlets, 3/4" x 3/4" x 3/4" ProPEX	Q2247757	7.28"	2.85"	1.25"	0.75" ProPEX	0.75" ProPEX	0.16 lbs.

Installation

Use any product designed to mount 1" copper pipe as a mounting bracket. For more information, refer to the Uponor Professional Plumbing Installation Guide or Uponor Radiant Floor Heating Installation Handbook.

Standards

CAN/CSA B137.5; ASTM F877; ASTM F1960

Codes

IPC; UPC; NSPC; NPC of Canada

Listings

ANSI/NSF 14 and 61 certified; ICC ESR 1099; IAPMO 3946

Related Applications

PEX-a Plumbing Systems

Contact Information

Uponor, Inc.
5925 148th Street West
Apple Valley, MN 55124 USA
Phone: 800.321.4739
Fax: 952.891.1409
www.uponorpro.com

Uponor Ltd.
2000 Argenta Rd., Plaza 1, Ste. 200
Mississauga, ON L5N 1W1 CANADA
Phone: 888.994.7726
Fax: 800.638.9517
www.uponorpro.com

¹ProPEX[®] is a registered trademark of Uponor, Inc. ProPEX[™] is a trademark of Uponor Ltd.

Engineered Polymer (EP) Branch Multi-port Tee

Submittal Information
Revision D: Oct. 9, 2013

Project Information

Job Name:

Location:

Part No. Ordered:

Engineer:

Date Submitted:

Contractor:

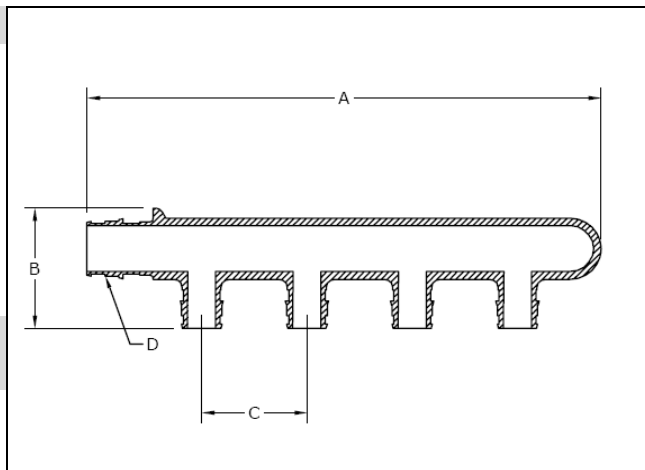
Submitted By:

Manufacturer's Representative:

Approved By:

Technical Data

Material:	UDEL GF120
Maximum Temperature (no pressure):	320°F
Maximum Working Temperature/Pressure:	210°F at 150 psi
Maximum Multi-port Tee Flow for ¾" Inlet:	13.2 gpm at 12 fps 8.8 gpm at 8 fps
Maximum Multi-port Tee Flow for 1" Inlet:	21.8 gpm at 12 fps 14.5 gpm at 8 fps



Product Information and Application Use

Engineered Polymer (EP) Branch Multi-port Tee is used in hot and cold domestic potable water distribution systems. The EP Branch Multi-port Tee is available with ¾" or 1" ProPEX® inlets and ½" ProPEX outlets.¹

✓ Description	Part Number	A	B	C	D	Weight
¾" EP Branch Multi-port Tee, 3 outlets	Q2237550	5.15"	1.62"	1.25"	¾" ProPEX	0.10 lbs.
¾" EP Branch Multi-port Tee, 4 outlets	Q2247550	6.40"	1.77"	1.25"	¾" ProPEX	0.13 lbs.
¾" EP Branch Multi-port Tee, 6 outlets	Q2267550	8.90"	1.62"	1.25"	¾" ProPEX	0.18 lbs.
1" EP Branch Multi-port Tee, 4 outlets	Q2241050	6.70"	1.88"	1.25"	1" ProPEX	0.17 lbs.
1" EP Branch Multi-port Tee, 6 outlets	Q2261050	9.30"	2.00"	1.25"	1" ProPEX	0.25 lbs.

Installation

Any product designed to mount 1" copper pipe (for the ¾" EP Branch Multi-port Tee) or ½" copper pipe (for the 1" EP Branch Multi-port Tee) may be used as a mounting bracket. For more information, refer to the Uponor Professional Plumbing Installation Guide.

Standards

CAN/CSA B137.5; ASTM F877; ASTM F1960

Codes

IPC; UPC; NSPC; NPC of Canada

Listings

ANSI/NSF 14- and 61-certified; ICC ESR 1099

Related Applications

PEX-a Plumbing Systems

Contact Information

Uponor, Inc.
5925 148th Street West
Apple Valley, MN 55124 USA
Phone: 800.321.4739
Fax: 952.891.1409
www.uponorpro.com

Uponor Ltd.
2000 Argentia Rd., Plaza 1, Ste. 200
Mississauga, ON L5N 1W1 CANADA
Phone: 888.994.7726
Fax: 800.638.9517
www.uponorpro.com

¹ProPEX® is a registered trademark of Uponor, Inc. ProPEX™ is a trademark of Uponor Ltd.

Engineered Polymer (EP) Flow-through Multi-port Elbow

Submittal Information
Revision C: Oct. 10, 2013

Project Information

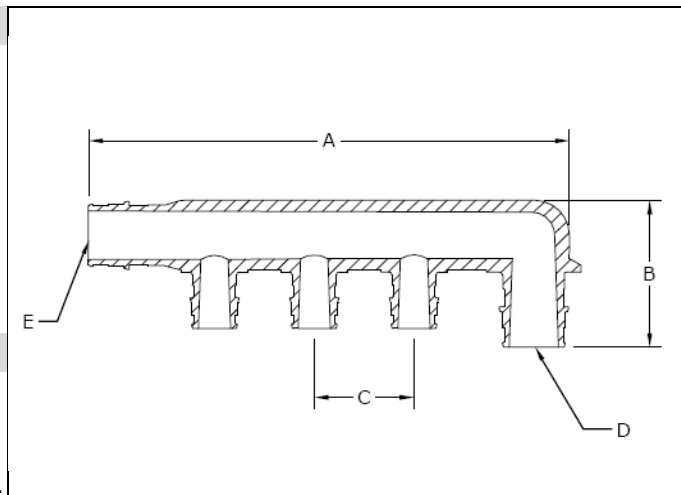
Job Name:	
Location:	Part No. Ordered:
Engineer:	Date Submitted:
Contractor:	Submitted By:
Manufacturer's Representative:	Approved By:

Technical Data

Material:	UDEL® Polysulfone GF120
Maximum Temperature (no pressure):	320°F (160°C)
Maximum Working Temperature/Pressure:	210°F at 150 psi (99°C at 10.3 bar)
Maximum Multi-port Elbow Flow for 3/4" Inlet:	13.2 gpm at 12 fps 8.8 gpm at 8 fps

Product Information and Application Use

Engineered Polymer (EP) Flow-through Multi-port Elbow features an integrated 3/4" ProPEX® elbow with 1/2" ProPEX branch outlets.¹ The elbow is designed for demanding, slab-on-grade, potable plumbing applications, and eliminates the need for multiple connections. The elbow is made of engineered polymer, a proven material in demanding hot-water applications.



✓ Description	Part Number	A	B	C	D	E	Weight
EP Flow-through Multi-port Elbow, 3 outlets, 3/4" x 3/4" ProPEX	Q2235577	6.03"	1.87"	1.25"	0.75"	0.75"	0.10 lbs.
EP Flow-through Multi-port Elbow, 4 outlets, 3/4" x 3/4" ProPEX	Q2245577	7.28"	1.87"	1.25"	0.75"	0.75"	0.14 lbs.

Installation

Any product designed to mount 1" copper pipe is suitable for use as a mounting bracket. For more information, refer to the Uponor Professional Plumbing Installation Guide.

Standards

CAN/CSA B137.5; ASTM F877; ASTM F1960

Codes

IPC; UPC; NSPC; NPC of Canada

Listings

ANSI/NSF 14- and 61-certified; ICC ESR 1099; IAPMO 3946; HUD MR 1269

Related Applications

PEX-a Plumbing Systems

Contact Information

Uponor, Inc.
5925 148th Street West
Apple Valley, MN 55124 USA
Phone: 800.321.4739
Fax: 952.891.2008
www.uponorpro.com

Uponor Ltd.
2000 Argentia Rd., Plaza 1, Ste. 200
Mississauga, ON L5N 1W1 CANADA
Phone: 888.994.7726
Fax: 800.638.9517
www.uponorpro.com

¹ProPEX® is a registered trademark of Uponor, Inc. ProPEX™ is a trademark of Uponor Ltd.

Engineered Polymer (EP) Branch Multi-port Elbow

Submittal Information
Revision C: Oct. 9, 2013

Project Information

Job Name:

Location:

Part No. Ordered:

Engineer:

Date Submitted:

Contractor:

Submitted By:

Manufacturer's Representative:

Approved By:

Technical Data

Material of Multi-port Elbow:	UDEL® Polysulfone GF120
Material of Clip:	Chevron Phillips Marlex 9018 High-density Polyethylene (HDPE), Black
Material of Screw:	Black Phosphate Carbon Steel
Max. Temp. (no pressure):	320°F (160°C)
Max. Working Temperature/Pressure:	210°F at 150 psi (99°C at 10.3 bar)
Maximum Multi-port Elbow Flow for ¾" Inlet:	13.2 gpm at 12 fps 8.8 gpm at 8 fps
Maximum Multi-port Elbow Flow for 1" Inlet:	21.8 gpm at 12 fps 14.5 gpm at 8 fps



Product Information and Application Use

Engineered Polymer (EP) Branch Multi-port Elbow features an integrated ¾" or 1" ProPEX® elbow inlet with ½" ProPEX branch outlets.¹ The elbow is designed for commercial plumbing applications, and eliminates the need for multiple connections. It is made of engineered polymer, a proven material for demanding hot-water applications. This product includes EP Mounting Clips (F7051250) with Phillips self-tapping screws.

✓	Description	Part Number	Length	Height	Width	Weight
	¾" EP Branch Multi-port Elbow, 7 outlets	Q2077550	9.00"	2.33"	1.77"	0.350 lbs.
	¾" EP Branch Multi-port Elbow, 8 outlets	Q2087550	9.80"	2.33"	1.77"	0.390 lbs.
	1" EP Branch Multi-port Elbow, 10 outlets	Q2101000	11.75"	2.56"	1.77"	0.470 lbs.

Installation

The mounting clips feature self-tapping screws, which are appropriate for wood or metal studs. Simply attach the clips to the multi-port and fasten the clips to the mounting surface.

Accessories

F7051250: EP Mounting Clip, ¾" to 1"

Standards

CAN/CSA B137.5; ASTM F877; ASTM F1960

Codes

IPC; UPC; NSPC; NPC of Canada

Listings

ANSI/NSF 14- and 61-certified; ICC ESR 1099; IAPMO 3946

Related Applications

PEX-a Plumbing Systems

Contact Information

Uponor, Inc.
5925 148th Street West
Apple Valley, MN 55124 USA
Phone: 800.321.4739
Fax: 952.891.2008
www.uponorpro.com

Uponor Ltd.
2000 Argentia Rd., Plaza 1, Ste. 200
Mississauga, ON L5N 1W1 CANADA
Phone: 888.994.7726
Fax: 800.638.9517
www.uponorpro.com

¹ProPEX® is a registered trademark of Uponor, Inc. ProPEX™ is a trademark of Uponor Ltd.

Engineered Polymer (EP) Branch Multi-port Tee

Submittal Information
Revision D: Oct. 9, 2013

Project Information

Job Name:

Location:

Part No. Ordered:

Engineer:

Date Submitted:

Contractor:

Submitted By:

Manufacturer's Representative:

Approved By:

Technical Data

Material of multi-port tee:	UDEL® Polysulfone GF120
Material of mounting clip:	Chevron Phillips Marlex 9018 High-density Polyethylene (HDPE), black
Material of screw:	Black phosphate carbon steel
Maximum temperature (no pressure):	320°F (160°C)
Max. working temperature/pressure:	210°F at 150 psi (99°C at 10.3 bar)
Max. Multi-port Tee Flow for ¾" Inlet:	13.2 gpm at 12 fps 8.8 gpm at 8 fps
Max. Multi-port Tee Flow for 1" Inlet:	21.8 gpm at 12 fps 14.5 gpm at 8 fps



Product Information and Application Use

Engineered Polymer (EP) Branch Multi-port Tees feature an integrated ¾" or 1" ProPEX® inlet with ½" ProPEX branch outlets.¹ Designed for commercial plumbing applications, they eliminate the need for multiple connections. These multi-port tees all come with EP Mounting Clips (F7051250) with Phillips self-tapping screws.

✓ Description	Part Number	Length	Height	Width	Weight
¾" EP Branch Multi-port Tee, 7 outlets with mounting clips	Q2277550	8.66"	2.10"	1.77"	0.327 lbs.
¾" EP Branch Multi-port Tee, 8 outlets with mounting clips	Q2287550	9.50"	2.10"	1.77"	0.362 lbs.
1" EP Branch Multi-port Tee, 7 outlets with mounting clips	Q2271051	8.90"	2.10"	1.77"	0.330 lbs.
1" EP Branch Multi-port Tee, 8 outlets with mounting clips	Q2281051	9.80"	2.10"	1.77"	0.365 lbs.
1" EP Branch Multi-port Tee, 10 outlets with mounting clips	Q2101051	11.60"	2.10"	1.77"	0.437 lbs.
1" EP Branch Multi-port Tee, 12 outlets with mounting clips	Q2121051	13.40"	2.10"	1.77"	0.505 lbs.

Installation

These multi-port tees feature mounting clips with self-tapping screws, which are appropriate for wood or metal studs. Simply attach the clips to the multi-port tee and fasten the clips to the mounting surface.

Accessories

F7051250: EP Mounting Clip, ¾" to 1"

Standards

CAN/CSA B137.5; ASTM F877; ASTM F1960

Codes

IPC; UPC; NSPC; NPC of Canada

Listings

ANSI/NSF 14- and 61-certified; ICC ESR 1099; IAPMO 3946

Related Applications

PEX-a Plumbing Systems

Contact Information

Uponor, Inc.
5925 148th Street West
Apple Valley, MN 55124 USA
Phone: 800.321.4739
Fax: 952.891.2008
www.uponorpro.com

Uponor Ltd.
2000 Argentia Rd., Plaza 1, Ste. 200
Mississauga, ON L5N 1W1 CANADA
Phone: 888.994.7726
Fax: 800.638.9517
www.uponorpro.com

¹ProPEX® is a registered trademark of Uponor, Inc. ProPEX™ is a trademark of Uponor Ltd.

Commercial Engineered Polymer (EP) Branch Multi-port Tee

Submittal Information

Revision E: March 19, 2014

Project Information

Job Name:

Location:

Part No. Ordered:

Engineer:

Date Submitted:

Contractor:

Submitted By:

Manufacturer's Representative:

Approved By:

Technical Data

Material of ¾" and 1" Multi-port Tee:	UDEL® Polysulfone GF120
Material of Mounting Clip (¾" and 1" only):	Chevron Phillips Marlex 9018 High-density Polyethylene (HDPE), black
Material of Screw (¾" and 1" only):	Black phosphate carbon steel
Material of 1¼" Multi-port Tee:	Acudel® Modified Polyphenylsulfone
Maximum Temperature (no pressure):	320°F (160°C)
Maximum Working Temperature/Pressure:	210°F at 150 psi (99°C at 10.3 bar)
Maximum Multi-port Tee Flow for ¾" Inlet:	8.8 gpm at 8 fps 13.2 gpm at 12 fps
Maximum Multi-port Tee Flow for 1" Inlet:	14.5 gpm at 8 fps 21.8 gpm at 12 fps
Maximum Multi-port Tee Flow for 1¼" Inlet:	21.7 gpm at 8 fps 32.6 gpm at 12 fps



Product Information and Application Use

Commercial Engineered Polymer (EP) Branch Multi-port Tees feature an integrated ¾" or 1" ProPEX® inlet with ½" ProPEX branch outlets, or a 1¼" ProPEX® inlet with ¾" ProPEX branch outlets.¹ Designed for commercial plumbing applications, they eliminate the need for multiple connections. The ¾" and 1" multi-port tees come with Mounting Clips (F7051250) with Phillips self-tapping screws.

✓ Description	Part Number	Length	Height	Width	Weight
¾" EP Branch Multi-port Tee, 7 outlets with mounting clips	Q2277550	8.66"	2.10"	1.77"	0.327 lbs.
¾" EP Branch Multi-port Tee, 8 outlets with mounting clips	Q2287550	9.50"	2.10"	1.77"	0.362 lbs.
1" EP Branch Multi-port Tee, 7 outlets with mounting clips	Q2271051	8.90"	2.10"	1.77"	0.330 lbs.
1" EP Branch Multi-port Tee, 8 outlets with mounting clips	Q2281051	9.80"	2.10"	1.77"	0.365 lbs.
1" EP Branch Multi-port Tee, 10 outlets with mounting clips	Q2101051	11.60"	2.10"	1.77"	0.437 lbs.
1" EP Branch Multi-port Tee, 12 outlets with mounting clips	Q2121051	13.40"	2.10"	1.77"	0.505 lbs.
1¼" EP Branch Multi-port Tee, 3 (¾") outlets	Q2231375	6.85"	2.34"	1.75"	0.220 lbs.

Installation

The ¾" and 1" multi-port tees feature mounting clips with self-tapping screws, which are appropriate for wood or metal studs. Simply attach the clips to the multi-port tee and fasten the clips to the mounting surface. For the 1¼" multi-port tee, mount the tee by securing all adjoining PEX pipes to the framing or support structure within 6" of each ProPEX connection. For more information, refer to the Uponor Professional Plumbing Installation Guide.

Standards

CAN/CSA B137.5; ASTM F877; ASTM F1960

Codes

IPC; UPC; NSPC; NPC of Canada

Listings

ANSI/NSF 14- and 61-certified; ICC ESR 1099; IAPMO 3946

Related Applications

PEX-a Plumbing Systems

Contact Information

Uponor, Inc.
5925 148th Street West
Apple Valley, MN 55124 USA
Phone: 800.321.4739
Fax: 952.891.2008
www.uponorpro.com

Uponor Ltd.
2000 Argentia Rd., Plaza 1, Ste. 200
Mississauga, ON L5N 1W1 CANADA
Phone: 888.994.7726
Fax: 800.638.9517
www.uponorpro.com

¹ProPEX® is a registered trademark of Uponor, Inc. ProPEX™ is a trademark of Uponor Ltd.

ProPEX® Lead-free (LF) Brass Ball Valve

Submittal Information
Revision A: Jan. 20, 2010

Project Information

Job Name:

Location:

Part No. Ordered:

Engineer:

Date Submitted:

Contractor:

Submitted By:

Manufacturer's Representative:

Approved By:

Technical Data

Material:	C69300 Brass
Maximum Temperature (no pressure):	250°F (121°C)
Maximum Working Pressure:	250 psi

Product Information and Application Use

Use the Uponor ProPEX® Lead-free Brass Ball Valve for all plumbing and radiant heating applications.¹

Both ends are manufactured with the ProPEX Fitting for connections to Uponor AquaPEX® tubing or Wirsbo hePEX™ tubing. These valves are not compatible with applications using glycol.



✓ Description	Part Number	Length	Width	Weight
ProPEX LF Brass Ball Valve (large bore), ½" PEX x ½" PEX	LF4815050	2.75"	1.62"	0.28 lbs.
ProPEX LF Brass Ball Valve (large bore), ¾" PEX x ¾" PEX	LF4817575	3.37"	1.67"	0.30 lbs.
ProPEX LF Brass Ball Valve (full port), ¾" PEX x ¾" PEX	LF4827575	5.11"	2.60"	0.40 lbs.
ProPEX LF Brass Ball Valve (full port), 1" PEX x 1" PEX	LF4821010	5.99"	3.08"	0.45 lbs.

Installation

Install valve according to local building code. Do not dismantle. Refer to the AquaPEX Professional Plumbing Installation Guide or the Radiant Floor Heating Installation Handbook for additional information.

Standards

CSA B137.5 and B125; ASTM F877; ASTM F1960; ASME A112.18.1

Codes

IPC; UPC; NSPC; NPC of Canada

Listings

ANSI/NSF 14- and 61-certified; U.P. Code, Annex G

Related Applications

PEX-a Plumbing Systems
Radiant Heating and Cooling Systems
Snow and Ice Melting Systems
Permafrost Protection Systems
Turf Conditioning Systems

Contact Information

Uponor, Inc.
5925 148th Street West
Apple Valley, MN 55124 USA
Phone: (800) 321-4739
Fax: (952) 891-1409
www.uponor-usa.com

Uponor Ltd.
2000 Argentia Rd., Plaza 1, Ste. 200
Mississauga, ON L5N 1W1 CANADA
Phone: (888) 994-7726
Fax: (800) 638-9517
www.uponor.ca

¹ProPEX® is a registered trademark of Uponor, Inc. ProPEX™ is a trademark of Uponor Ltd.

ProPEX® Lead-free (LF) Brass to Copper Ball Valve

Submittal Information

Revision A: Jan. 20, 2009

Project Information

Job Name:

Location: _____ Part No. Ordered: _____

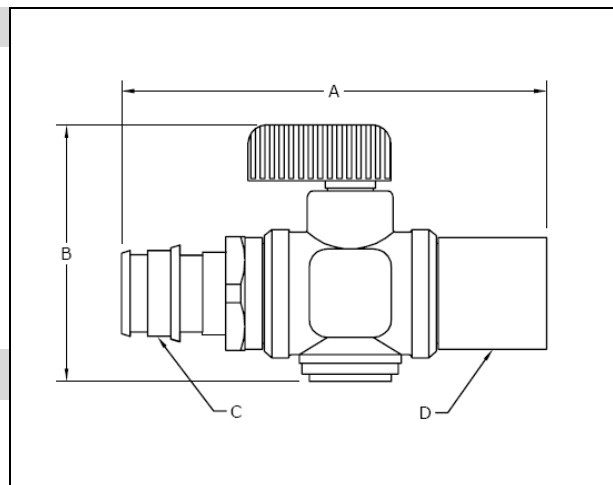
Engineer: _____ Date Submitted: _____

Contractor: _____ Submitted By: _____

Manufacturer's Representative: _____ Approved By: _____

Technical Data

Material: C69300 Brass
 Maximum Working Temperature: 250°F (121°C)
 Maximum Working Pressure: 250 psi



Product Information and Application Use

The Uponor ProPEX® Lead-free Brass to Copper Ball Valves feature in-line isolation valves.¹

✓ Description	Part Number	A	B	C	D	Weight
ProPEX LF Brass to Copper Ball Valve (large bore), ½" PEX x ½" Copper Adapter	LF4805050	2.32"	1.67"	½"	½" CU	0.30 lbs.

Installation

Install valve according to local building code. Do not dismantle. If soldering, aim flame away from the fitting. For more information, refer to the Uponor AquaPEX® Professional Plumbing Installation Handbook or the Uponor Radiant Installation Handbook.

Standards

CSA 137.5 & B125; ASTM F877; ASTM F1960; ASME A112.18.1

Codes

IPC; UPC; NPC of Canada

Listings

ANSI/NSF 14- and 61-certified; U.P. Code, Annex G

Related Applications

PEX-a Plumbing Systems
 Radiant Heating and Cooling Systems
 Snow and Ice Melting Systems
 Permafrost Protection Systems
 Turf Conditioning Systems

Contact Information

Uponor, Inc.
 5925 148th Street West
 Apple Valley, MN 55124 USA
 Phone: (800) 321-4739
 Fax: (952) 891-2008
 www.uponor-usa.com

Uponor Ltd.
 2000 Argentia Rd., Plaza 1, Ste. 200
 Mississauga, ON L5N 1W1 CANADA
 Phone: (888) 994-7726
 Fax: (800) 638-9517
 www.uponor.ca

¹ProPEX® is a registered trademark of Uponor, Inc. ProPEX™ is a trademark of Uponor Ltd.

ProPEX® Lead-free (LF) Brass Ball Valve, 1/2" PEX x 1/2" MIP

Submittal Information
Revision B: June 17, 2013

Project Information

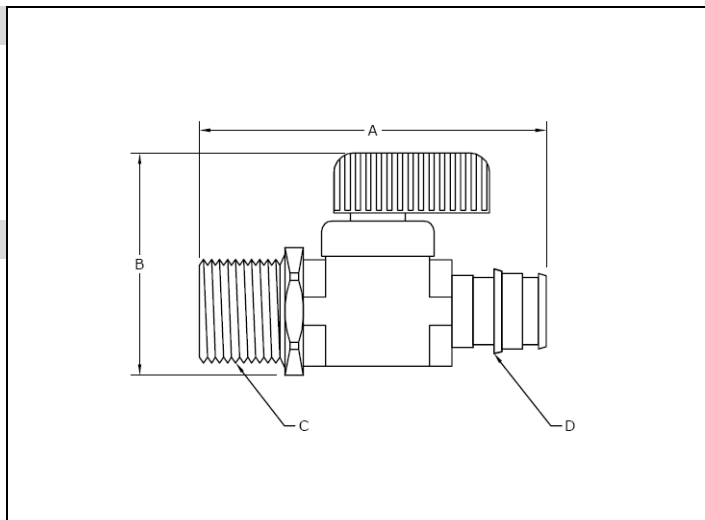
Job Name:	
Location:	Part No. Ordered:
Engineer:	Date Submitted:
Contractor:	Submitted By:
Manufacturer's Representative:	Approved By:

Technical Data

Material:	C69300 Brass
Maximum Temperature (no pressure):	250°F (121°C)
Maximum Working Pressure:	250 psi

Product Information and Application Use

ProPEX® Lead-free Ball Valve features a shut-off valve between 1/2" Uponor AquaPEX® tubing and 1/2" male iron pipe (MIP).¹ These valves are not compatible with applications using glycol.



✓ Description	Part Number	A	B	C	D	Weight
ProPEX LF Brass Ball Valve, 1/2" PEX x 1/2" MIP	LF4795050	2.69"	1.63"	1/2" MNPT	1/2" ProPEX	0.20 lbs.

Installation

Install valve according to local building code. Do not dismantle. If soldering, aim flame away from fitting. For more information, refer to the Uponor Professional Plumbing Installation Guide.

Standards

CSA 137.5 and B125; ASTM F877; ASTM F1960; ASME A112.18.1

Codes

IPC; UPC; NSPC; NPC of Canada

Listings

ANSI/NSF 14- and 61-certified; U.P. Code, Annex G

Related Applications

PEX-a Plumbing Systems

Contact Information

Uponor, Inc.
5925 148th Street West
Apple Valley, MN 55124 USA
Phone: 800.321.4739
Fax: 952.891.2008
www.uponorpro.com

Uponor Ltd.
2000 Argentia Rd., Plaza 1, Ste. 200
Mississauga, ON L5N 1W1 CANADA
Phone: 888.994.7726
Fax: 800.638.9517
www.uponorpro.com

¹ProPEX® is a registered trademark of Uponor, Inc. ProPEX™ is a trademark of Uponor Ltd.

ProPEX® Lead-free (LF) Brass Swivel Faucet Adapter, ½" PEX x ½" NPSM

Submittal Information

Revision A: Jan. 20, 2010

Project Information

Job Name:

Location:

Part No. Ordered:

Engineer:

Date Submitted:

Contractor:

Submitted By:

Manufacturer's Representative:

Approved By:

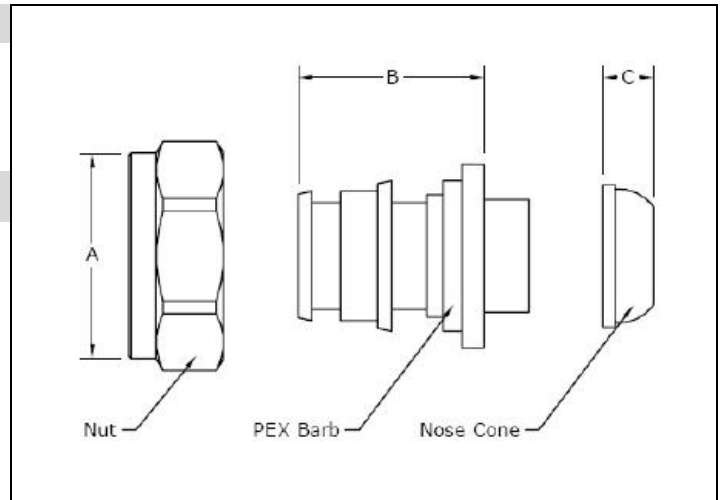
Technical Data

Material: C69300 Brass

Product Information and Application Use

The ProPEX® Lead-free Brass Swivel Faucet Adapter is available for use in hot and cold domestic potable water systems.¹ The end of the adapter is configured with the Uponor ProPEX Fitting for connections to Uponor AquaPEX® tubing.

The Swivel Faucet Adapter is ½" ProPEX by ½" National Pipe Straight Mechanical (NPSM) thread for connections to a male NPSM faucet.



✓ Description	Part Number	A	B	C	Weight
ProPEX LF Brass Swivel Faucet Adapter, ½" PEX x ½" NPSM	LF4655050	0.99"	0.98"	0.26"	0.10 lbs.

Installation

Use appropriate ProPEX Ring (sold separately) for connecting the tubing. Refer to the AquaPEX Professional Plumbing Installation Guide for additional information.

Standards

CAN/CSA B137.5; ASTM F877; ASTM F1960

Codes

IPC; UPC; NSPC; NPC of Canada

Listings

HUD MR 1269; ICC ESR 1099; ANSI/NSF 14- and 61-certified; IAPMO 3558; U.P. Code, Annex G

Related Applications

PEX-a Plumbing Systems

Contact Information

Uponor, Inc.
5925 148th Street West
Apple Valley, MN 55124 USA
Phone: (800) 321-4739
Fax: (952) 891-2008
www.uponor-usa.com

Uponor Ltd.
2000 Argentia Rd., Plaza 1, Ste. 200
Mississauga, ON L5N 1W1 CANADA
Phone: (888) 994-7726
Fax: (800) 638-9517
www.uponor.ca

¹ProPEX® is a registered trademark of Uponor, Inc. ProPEX™ is a trademark of Uponor Ltd.

ProPEX® Lead-free (LF) Brass to PE Coupling, 1" PEX x 1" PE

Submittal Information

Revision A: Jan. 20, 2010

Project Information

Job Name:

Location:

Part No. Ordered:

Engineer:

Date Submitted:

Contractor:

Submitted By:

Manufacturer's Representative:

Approved By:

Technical Data

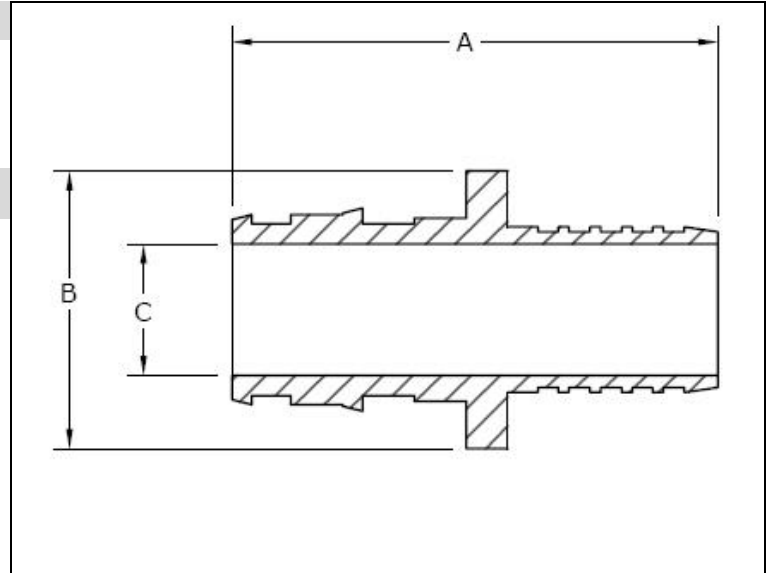
Material: C69300 Brass

Product Information and Application Use

The ProPEX® Lead-free Brass to Polyethylene (PE) Coupling transitions PE pipe to Uponor AquaPEX® tubing.¹

Approved for use in hot and cold domestic potable water systems and radiant heating systems, these couplings are also safe for direct burial in soil.

Note: This product does not include the crimp ring for the PE side of the coupling.



✓ Description	Part Number	A	B	C	Weight
ProPEX LF Brass to PE Coupling, 1" PEX x 1" PE	LF4591010	2.490"	1.350"	0.818"	0.20 lbs.

Installation

Use the appropriate ProPEX Ring (sold separately) for connecting PEX tubing. Use crimp ring to secure the PE tubing to the fitting. Refer to the AquaPEX Professional Plumbing Installation Guide or the Radiant Floor Heating Installation Handbook for additional information.

Standards

CAN/CSA B137.5; ASTM F877; ASTM F1960

Codes

UPC; NSPC; NPC of Canada

Listings

ANSI/NSF 14- and 61-certified; SBCCI (PST & ESI Report No. 9661); ICBO ER 5142; U.P. Code, Annex G

Related Applications

PEX-a Plumbing Systems
 Radiant Heating and Cooling Systems
 Snow and Ice Melting Systems
 Permafrost Protection Systems
 Turf Conditioning Systems

Contact Information

Uponor, Inc.
 5925 148th Street West
 Apple Valley, MN 55124 USA
 Phone: (800) 321-4739
 Fax: (952) 891-2008
 www.uponor-usa.com

Uponor Ltd.
 2000 Argentia Rd., Plaza 1, Ste. 200
 Mississauga, ON L5N 1W1 CANADA
 Phone: (888) 994-7726
 Fax: (800) 638-9517
 www.uponor.ca

¹ProPEX® is a registered trademark of Uponor, Inc. ProPEX™ is a trademark of Uponor Ltd.

ProPEX® Lead-free (LF) Brass to Polybutylene (PB) Coupling

Submittal Information
Revision A: Jan. 20, 2010

Project Information

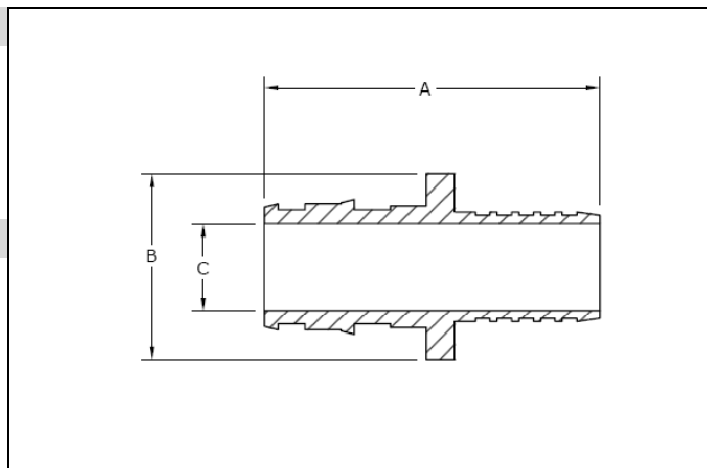
Job Name:	
Location:	Part No. Ordered:
Engineer:	Date Submitted:
Contractor:	Submitted By:
Manufacturer's Representative:	Approved By:

Technical Data

Material: C69300 Brass

Product Information and Application Use

The ProPEX® Lead-free Brass to Polybutylene (PB) Coupling transitions polybutylene tubing to Uponor AquaPEX® tubing.¹ This product does not include the crimp ring for the PB side of the coupling. Approved for use in hot and cold domestic potable water systems, this coupling is also safe for direct burial in soil.



✓ Description	Part Number	A	B	C	Weight
ProPEX LF Brass to PB Coupling, 1/2" PEX x 1/2" PB	LF4585050	1.47"	0.75"	0.398"	0.20 lbs.
ProPEX LF Brass to PB Coupling, 3/4" PEX x 3/4" PB	LF4587575	1.76"	1.12"	0.614"	0.40 lbs.

Installation

Use the appropriate Uponor ProPEX Ring (sold separately) for connecting to PEX tubing. Secure the PB tubing to the fitting with a crimp ring. For more information, refer to the AquaPEX Professional Plumbing Installation Guide.

Standards

CAN/CSA B137.5; ASTM F877; ASTM F1960

Codes

IPC; UPC; NSPC; NPC of Canada

Listings

IAMPO 3558; ICC ESR 1099; ANSI/NSF 14- and 61-certified; U.P. Code, Annex G

Related Applications

PEX-a Plumbing Systems

Contact Information

Uponor, Inc.
5925 148th Street West
Apple Valley, MN 55124 USA
Phone: (800) 321-4739
Fax: (952) 891-2008
www.uponor-usa.com

Uponor Ltd.
2000 Argentia Rd., Plaza 1, Ste. 200
Mississauga, ON L5N 1W1 CANADA
Phone: (888) 994-7726
Fax: (800) 638-9517
www.uponor.ca

¹ProPEX® is a registered trademark of Uponor, Inc. ProPEX™ is a trademark of Uponor Ltd.

ProPEX® Lead-free Drop Ear Brass Elbow

Submittal Information
Revision A: Jan. 5, 2010

Project Information

Job Name:

Location:

Part No. Ordered:

Engineer:

Date Submitted:

Contractor:

Submitted By:

Manufacturer's Representative:

Approved By:

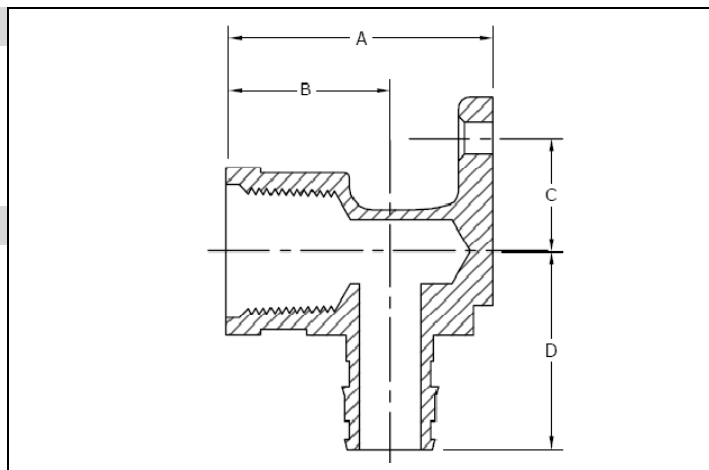
Technical Data

Material: C69300 Brass

Product Information and Application Use

Uponor offers the ProPEX® Lead-free Drop Ear Brass Elbow for use in hot and cold domestic potable water systems.¹

One end of the adapter connects to female iron pipe (FIP) and the other end includes an Uponor ProPEX fitting for connections to Uponor AquaPEX® tubing.



✓ Description	Part Number	A	B	C	D	Weight
ProPEX LF Drop Ear Brass Elbow, 1/2" PEX x 1/2" FIP	LF4235050	1.70"	1.04"	0.71"	1.24"	0.23 lbs.
ProPEX LF Drop Ear Brass Elbow, 1" PEX x 1" FIP	LF4231010	2.45"	1.35"	1.02"	2.03"	0.87 lbs.
ProPEX LF Drop Ear Brass Elbow, 1/2" PEX x 3/8" FIP	LF4235038	1.70"	1.04"	0.71"	1.24"	0.27 lbs.
ProPEX LF Drop Ear Brass Elbow, 3/4" PEX x 3/4" FIP	LF4237575	1.92"	1.00"	0.88"	1.66"	0.47 lbs.

Installation

A ProPEX Ring is required for making ProPEX connections. Use the appropriate ProPEX Ring for tubing. For more information, refer to the Uponor Professional Plumbing Installation Guide.

Standards

CAN/CSA B137.5; ASTM F877; ASTM F1960

Codes

IPC; UPC; NSPC; NPC of Canada

Listings

ANSI/NSF 14- and 61-certified; ICC ESR 1099; HUD MR 1269; U.P. Code, Annex G

Related Applications

PEX-a Plumbing Systems

Contact Information

Uponor, Inc.
5925 148th Street West
Apple Valley, MN 55124 USA
Phone: (800) 321-4739
Fax: (952) 891-2008
www.uponor-usa.com

Uponor Ltd.
2000 Argenta Rd., Plaza 1, Ste. 200
Mississauga, ON L5N 1W1 CANADA
Phone: (888) 994-7726
Fax: (800) 638-9517
www.uponor.ca

¹ProPEX® is a registered trademark of Uponor, Inc. ProPEX™ is a trademark of Uponor Ltd.

ProPEX® Lead-free (LF) Brass Elbow, ½" PEX x ½" MIP

Submittal Information
Revision B: Jan. 27, 2010

Project Information

Job Name:	
Location:	Part No. Ordered:
Engineer:	Date Submitted:
Contractor:	Submitted By:
Manufacturer's Representative:	Approved By:

Technical Data

Material:	C69300 Brass
Maximum Temperature (no pressure):	320°F (160°C)
Maximum Working Temperature/Pressure:	210°F at 150 psi (99°C at 10 bar)



Product Information and Application Use

Uponor's ProPEX® Lead-free Brass Elbow with Membrane Interface Probe (MIP) makes 90-degree connections for ½" Uponor AquaPEX® tubing to ½" Male NPT thread.¹

✓ Description	Part Number	Length	Width	Height	Weight
ProPEX LF Brass Elbow, ½" PEX x ½" MIP	LF4125050	1.75"	1.50"	1.75"	0.12 lbs.

Installation

ProPEX Tool and ProPEX Rings (sold separately) are required for connecting the PEX tubing. Use the appropriate ProPEX Ring for connecting to PEX tubing. Refer to the AquaPEX Professional Plumbing Installation Guide or Radiant Floor Heating Installation Handbook for additional information.

Standards

CAN/CSA B137.5; ASTM F877; ASTM F1960

Codes

IPC; UPC; NSPC; NPC of Canada

Listings

IAPMO 3558; ANSI/NSF 14- and 61-certified; HUD MR 1269; ICC ESR 1099; U.P. Code, Annex G

Related Applications

PEX-a Plumbing Systems
Radiant Heating and Cooling Systems
Snow and Ice Melting Systems
Permafrost Protection Systems
Turf Conditioning Systems

Contact Information

Uponor, Inc.
5925 148th Street West
Apple Valley, MN 55124 USA
Phone: (800) 321-4739
Fax: (952) 891-2008
www.uponor-usa.com

Uponor Ltd.
2000 Argentia Rd., Plaza 1, Ste. 200
Mississauga, ON L5N 1W1 CANADA
Phone: (888) 994-7726
Fax: (800) 638-9517
www.uponor.ca

¹ProPEX® is a registered trademark of Uponor, Inc. ProPEX™ is a trademark of Uponor, Ltd.

ProPEX® Lead-free (LF) Brass to Copper Ball Valve (large bore)

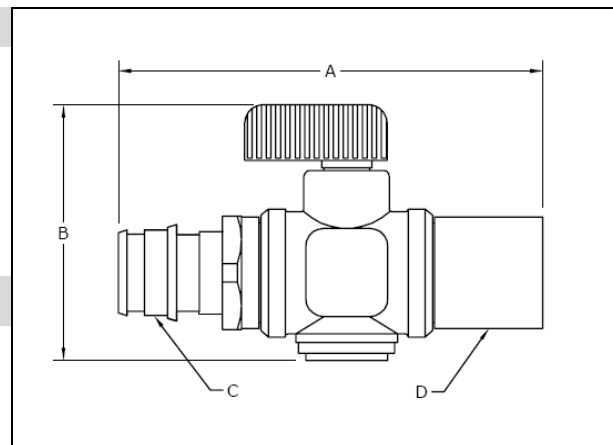
Submittal Information
Revision B: July 12, 2013

Project Information

Job Name:	
Location:	Part No. Ordered:
Engineer:	Date Submitted:
Contractor:	Submitted By:
Manufacturer's Representative:	Approved By:

Technical Data

Material:	C69300 Brass
Maximum Working Temperature:	250°F (121°C)
Maximum Working Pressure:	250 psi (17 bar)



Product Information and Application Use

Uponor ProPEX® Lead-free Brass Ball Valves (large bore) transition brass to copper and feature in-line isolation valves.¹ These valves are not compatible with applications using glycol.

✓ Description	Part Number	A	B	C	D	Weight
ProPEX LF Brass Ball Valve (large bore), ½" PEX x ½" Copper Adapter	LF4805050	2.32"	1.67"	0.50"	0.50" CU	0.30 lbs.
ProPEX LF Brass Ball Valve (large bore), ¾" PEX x ¾" Copper Adapter	LF4807575	3.43"	1.67"	0.75"	0.75" CU	0.30 lbs.

Installation

Install valve according to local building code. Do not dismantle. If soldering, aim flame away from the fitting. For more information, refer to the Uponor AquaPEX® Professional Plumbing Installation Guide or the Radiant Floor Heating Installation Handbook.

Standards

CSA B137.5 and B125; ASTM F877; ASTM F1960; ASME A112.18.1

Codes

UPC; NPC of Canada

Listings

NSF 9- and 61-certified; U.P. Code, Annex G

Related Applications

PEX-a Plumbing Systems
Radiant Heating and Cooling Systems
Snow and Ice Melting Systems
Permafrost Protection Systems
Turf Conditioning Systems

Contact Information

Uponor, Inc.
5925 148th Street West
Apple Valley, MN 55124 USA
Phone: 800.321.4739
Fax: 952.891.2008
www.uponorpro.com

Uponor Ltd.
2000 Argentia Rd., Plaza 1, Ste. 200
Mississauga, ON L5N 1W1 CANADA
Phone: 888.994.7726
Fax: 800.638.9517
www.uponorpro.com

¹ProPEX® is a registered trademark of Uponor, Inc. ProPEX™ is a trademark of Uponor Ltd.

ProPEX® Lead-free (LF) Brass Female Threaded Adapter

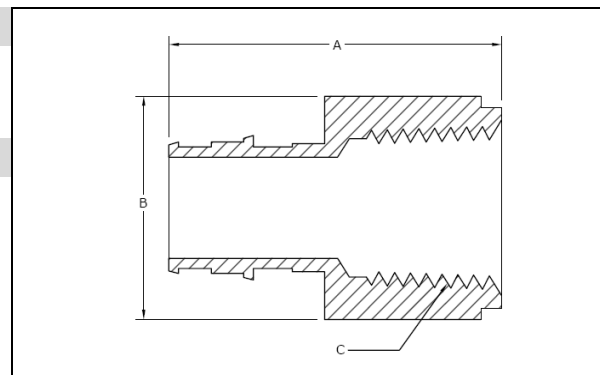
Submittal Information
Revision B: June 8, 2012

Project Information

Job Name:	
Location:	Part No. Ordered:
Engineer:	Date Submitted:
Contractor:	Submitted By:
Manufacturer's Representative:	Approved By:

Technical Data

Material: C69300 Brass



Product Information and Application Use

The ProPEX® Lead-free Brass Female Threaded Adapter connects Uponor PEX-a tubing to female NPT threads.¹ Use these fittings in hot and cold domestic potable water systems, residential fire sprinkler systems or hydronic radiant heating and cooling systems. One end of the adapter is manufactured with the Uponor ProPEX fitting for connections to Wirsbo hePEX™ tubing or Uponor AquaPEX® tubing. The other end of the adapter connects to copper. These adapters are safe for direct burial in soil.

✓ Description	Part Number	A	B	C	Weight
ProPEX LF Brass Female Threaded Adapter, ½" PEX x ½" NPT	LF4575050	1.57"	1" HEX	½" NPT	0.20 lbs.
ProPEX LF Brass Female Threaded Adapter, ½" PEX x ¾" NPT	LF4575075	1.75"	1 ⅜" HEX	¾" NPT	0.40 lbs.
ProPEX LF Brass Female Threaded Adapter, ¾" PEX x ¾" NPT*	LF4577575	1.87"	1 ⅜" HEX	¾" NPT	0.20 lbs.
ProPEX LF Brass Female Threaded Adapter, ¾" PEX x 1" NPT	LF4577510	2.21"	1 ½" HEX	1" NPT	0.40 lbs.
ProPEX LF Brass Female Threaded Adapter, 1" PEX x 1" NPT*	LF4571010	2.44"	1 ½" HEX	1" NPT	0.45 lbs.
ProPEX LF Brass Female Threaded Adapter, 1 ¼" PEX x 1 ¼" NPT*	LF4571313	2.57"	2" HEX	1 ¼" NPT	1.00 lbs.
ProPEX LF Brass Female Threaded Adapter, 1 ½" PEX x 1 ½" NPT*	LF4571515	2.75"	2 ½" HEX	1 ½" NPT	2.20 lbs.
ProPEX Brass Female Threaded Adapter, 2" PEX x 2" NPT*	LF4572020	3.53"	3" HEX	2" NPT	2.20 lbs.

Installation

Use the appropriate ProPEX Ring for PEX-a tubing. Refer to the Uponor AquaPEX® Professional Plumbing Installation Guide, AquaSAFE™ Residential Fire Sprinkler Installation Guide or Uponor Radiant Installation Handbook for additional information.

Standards

CAN/CSA B137.5; ASTM F877; ASTM F1960

Codes

IPC; UPC; NSPC; NPC of Canada

Listings

ANSI/NSF 14- and 61-certified; ICC ESR 1099; HUD MR 1269; U.P. Code, Annex G; *UL 1821; *ULC/ORD-C199P

Related Applications

PEX-a Plumbing Systems
Radiant Heating and Cooling Systems
Snow and Ice Melting Systems
Permafrost Protection Systems
Turf Conditioning Systems
AquaSAFE Fire Safety Systems

Contact Information

Uponor, Inc.
5925 148th Street West
Apple Valley, MN 55124 USA
Phone: (800) 321-4739
Fax: (952) 891-1409
www.uponorpro.com

Uponor Ltd.
2000 Argentia Rd., Plaza 1, Ste. 200
Mississauga, ON L5N 1W1 CANADA
Phone: (888) 994-7726
Fax: (800) 638-9517
www.uponorpro.com

¹ProPEX® is a registered trademark of Uponor, Inc. ProPEX™ is a trademark of Uponor Ltd.

ProPEX® Lead-free (LF) Brass Male Threaded Adapter

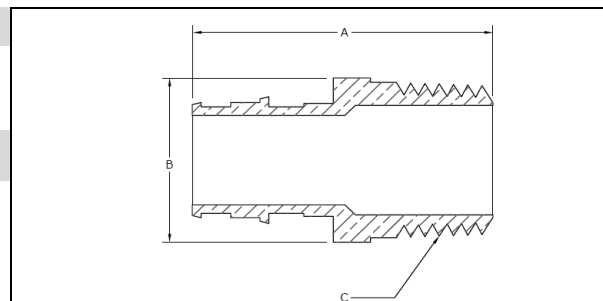
Submittal Information
Revision C: June 8, 2012

Project Information

Job Name:	
Location:	Part No. Ordered:
Engineer:	Date Submitted:
Contractor:	Submitted By:
Manufacturer's Representative:	Approved By:

Technical Data

Material: C69300 Brass



Product Information and Application Use

ProPEX® Lead-free (LF) Male Threaded Adapters connect Uponor PEX tubing to male NPT threads for use in hot and cold domestic potable water systems, residential fire safety and hydronic radiant heating and cooling systems.¹ These adapters are safe for direct burial in soil.

✓ Description	Part Number	A	B	C	Weight
ProPEX LF Brass Male Threaded Adapter, 3/8" PEX x 1/2" NPT	LF4523850	1.62"	7/8" HEX	1/2" NPT	0.11 lbs.
ProPEX LF Brass Male Threaded Adapter, 1/2" PEX x 1/2" NPT	LF4525050	1.73"	7/8" HEX	1/2" NPT	0.32 lbs.
ProPEX LF Brass Male Threaded Adapter, 1/2" PEX x 3/4" NPT	LF4525075	1.78"	1 1/8" HEX	3/4" NPT	0.18 lbs.
ProPEX LF Brass Male Threaded Adapter, 3/4" PEX x 3/4" NPT*	LF4527575	2.02"	1 1/8" HEX	3/4" NPT	0.20 lbs.
ProPEX LF Brass Male Threaded Adapter, 3/4" PEX x 1" NPT*	LF4527510	2.22"	1 3/8" HEX	1" NPT	0.35 lbs.
ProPEX LF Brass Male Threaded Adapter, 1" PEX x 3/4" NPT	LF4521075	2.25"	1 1/4" HEX	3/4" NPT	0.30 lbs.
ProPEX LF Brass Male Threaded Adapter, 1" PEX x 1" NPT*	LF4521010	2.46"	1 3/8" HEX	1" NPT	0.44 lbs.
ProPEX LF Brass Male Threaded Adapter, 1 1/4" PEX x 1 1/4" NPT*	LF4521313	2.72"	1 3/4" HEX	1 1/4" NPT	0.75 lbs.
ProPEX LF Brass Male Threaded Adapter, 1 1/2" PEX x 1 1/2" NPT*	LF4521515	3.00"	2 1/4" HEX	1 1/2" NPT	0.80 lbs.
ProPEX LF Brass Male Threaded Adapter, 2" PEX x 2" NPT*	LF4522020	3.86"	2 3/8" HEX	2" NPT	1.90 lbs.

Installation

Use the appropriate ProPEX Ring for PEX-a tubing. Refer to the Uponor AquaPEX® Professional Plumbing Installation Guide, AquaSAFE™ Residential Fire Sprinkler Installation Guide or Uponor Radiant Installation Handbook for additional information.

Standards

CAN/CSA B137.5; ASTM F877; ASTM F1960

Codes

IPC; UPC; NSPC; NPC of Canada

Listings

ANSI/NSF 14- and 61-certified; HUD MR 1269; ICC ESR 1099; IAPMO 3558; U.P. Code, Annex G; *UL 1821; *ULC/ORD-C199P

Related Applications

PEX-a Plumbing Systems
Radiant Heating and Cooling Systems
Snow and Ice Melting Systems
Permafrost Protection Systems
Turf Conditioning Systems
AquaSAFE Fire Safety Systems

Contact Information

Uponor, Inc.
5925 148th Street West
Apple Valley, MN 55124 USA
Phone: (800) 321-4739
Fax: (952) 891-1409
www.uponorpro.com

Uponor Ltd.
2000 Argentia Rd., Plaza 1, Ste. 200
Mississauga, ON L5N 1W1 CANADA
Phone: (888) 994-7726
Fax: (800) 638-9517
www.uponorpro.com

¹ProPEX® is a registered trademark of Uponor, Inc. ProPEX™ is a trademark of Uponor Ltd.

ProPEX® Lead-free (LF) Brass Sweat Adapter

Submittal Information
Revision B: June 8, 2012

Project Information

Job Name:

Location:

Part No. Ordered:

Engineer:

Date Submitted:

Contractor:

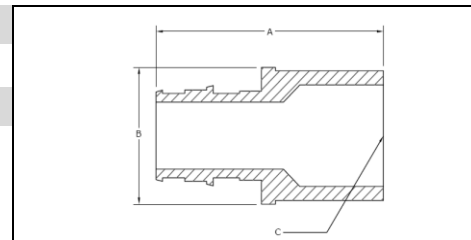
Submitted By:

Manufacturer's Representative:

Approved By:

Technical Data

Material: C69300 Brass



Product Information and Application Use

ProPEX® Lead-free Brass Sweat Adapters transition Uponor PEX tubing to copper pipe for use in hot and cold domestic potable water systems, residential fire safety and hydronic radiant heating and cooling systems.¹ These adapters are safe for direct burial in soil.

✓ Description	Part Number	A	B	C	Weight
ProPEX LF Brass Sweat Adapter, 3/8" PEX x 1/2" Copper	LF4513850	1.32"	0.721"	0.50" CU	0.08 lbs.
ProPEX LF Brass Sweat Adapter, 1/2" PEX x 1/2" Copper	LF4515050	1.44"	0.750"	0.50" CU	0.08 lbs.
ProPEX LF Brass Sweat Adapter, 1/2" PEX x 3/4" Copper	LF4515075	1.63"	0.989"	0.75" CU	0.16 lbs.
ProPEX LF Brass Sweat Adapter, 3/4" PEX x 1/2" Copper	LF4517550	1.67"	1.070"	0.50" CU	0.16 lbs.
ProPEX LF Brass Sweat Adapter, 3/4" PEX x 3/4" Copper*	LF4517575	2.04"	1.070"	0.75" CU	0.30 lbs.
ProPEX LF Brass Sweat Adapter, 3/4" PEX x 1" Copper	LF4517510	2.17"	1.258"	1.00" CU	0.31 lbs.
ProPEX LF Brass Sweat Adapter, 1" PEX x 1" Copper*	LF4511010	2.40"	1.345"	1.00" CU	0.30 lbs.
ProPEX LF Brass Sweat Adapter, 1 1/4" PEX x 1 1/4" Copper*	LF4511313	2.63"	1.640"	1.25" CU	0.50 lbs.
ProPEX LF Brass Sweat Adapter, 1 1/2" PEX x 1 1/2" Copper*	LF4511515	2.75"	1.875"	1.50" CU	0.50 lbs.
ProPEX LF Brass Sweat Adapter, 2" PEX x 2" Copper*	LF4512020	3.53"	3.00"	2.00" CU	2.00 lbs.

Installation

Use the appropriate Uponor ProPEX Ring for the tubing (sold separately). Do not solder within 18 inches of the ProPEX Fitting. Refer to the AquaPEX® Professional Plumbing Installation Guide, Radiant Floor Heating Installation Handbook or AquaSAFE™ Residential Fire Sprinkler Installation Guide for additional information.

Standards

CAN/CSA B137.5; ASTM F877; ASTM F1960

Codes

IPC; UPC; NSPC; NPC of Canada

Listings

HUD MR 1269; ICC ESR 1099; ANSI/NSF 14- and 61-certified; U.P. Code, Annex G; *UL 1821; *ULC/ORD-C199P

Related Applications

PEX-a Plumbing Systems
Radiant Heating and Cooling Systems
Snow and Ice Melting Systems
Permafrost Protection Systems
Turf Conditioning Systems
AquaSAFE Fire Safety Systems

Contact Information

Uponor, Inc.
5925 148th Street West
Apple Valley, MN 55124 USA
Phone: (800) 321-4739
Fax: (952) 891-1409
www.uponorpro.com

Uponor Ltd.
2000 Argentia Rd., Plaza 1, Ste. 200
Mississauga, ON L5N 1W1 CANADA
Phone: (888) 994-7726
Fax: (800) 638-9517
www.uponorpro.com

¹ProPEX® is a registered trademark of Uponor, Inc. ProPEX™ is a trademark of Uponor Ltd.

ProPEX® Lead-free (LF) Brass Fitting Adapter

Submittal Information
Revision A: Jan. 20, 2010

Project Information

Job Name:

Location:

Part No. Ordered:

Engineer:

Date Submitted:

Contractor:

Submitted By:

Manufacturer's Representative:

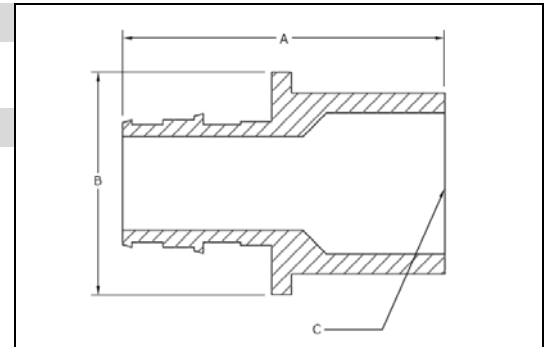
Approved By:

Technical Data

Material: C69300 Brass

Product Information and Application Use

ProPEX® Lead-free Brass Fitting Adapters transition PEX tubing to copper fittings.¹ These adapters are approved for use in hot and cold domestic potable water systems and for use in hydronic radiant heating systems. One end of the adapter is manufactured with the Uponor ProPEX Fitting for connections to Wirsbo hePEX™ tubing or Uponor AquaPEX® tubing. These adapters are safe for direct burial in soil.



✓	Description	Part Number	A	B	C	Weight
	ProPEX LF Brass Fitting Adapter, ½" PEX x ½" Copper	LF4505050	1.39"	0.740"	½" CU	0.06 lbs.
	ProPEX LF Brass Fitting Adapter, ½" PEX x ¾" Copper	LF4505075	1.64"	0.916"	¾" CU	0.10 lbs.
	ProPEX LF Brass Fitting Adapter, ¾" PEX x ½" Copper	LF4507550	1.63"	1.125"	½" CU	0.13 lbs.
	ProPEX LF Brass Fitting Adapter, ¾" PEX x ¾" Copper	LF4507575	1.88"	1.070"	¾" CU	0.12 lbs.
	ProPEX LF Brass Fitting Adapter, ¾" PEX x 1" Copper	LF4507510	2.05"	1.187"	1" CU	0.18 lbs.
	ProPEX LF Brass Fitting Adapter, 1" PEX x 1" Copper	LF4501010	2.28"	1.345"	1" CU	0.19 lbs.
	ProPEX LF Brass Fitting Adapter, 1¼" PEX x 1¼" Copper	LF4501313	2.60"	1.640"	1¼" CU	0.40 lbs.
	ProPEX LF Brass Fitting Adapter, 1½" PEX x 1½" Copper	LF4501515	3.00"	1.750"	1½" CU	0.50 lbs.
	ProPEX LF Brass Fitting Adapter, 2" PEX x 2" Copper	LF4502020	3.73"	2.600"	2" CU	0.80 lbs.

Installation

ProPEX Tool and ProPEX Rings (sold separately) are required for connecting the PEX tubing. Do not solder within 18 inches of the ProPEX Fitting. For more information, refer to the AquaPEX Professional Plumbing Installation Guide or Radiant Floor Heating Installation Handbook.

Standards

CAN/CSA B137.5; ASTM F877; ASTM F1960

Codes

IPC; UPC; NSPC; NPC of Canada

Listings

HUD MR 1269; ICC ESR 1099; ANSI/NSF 14- and 61-certified; U.P. Code, Annex G

Related Applications

PEX-a Plumbing Systems
Radiant Heating and Cooling Systems
Snow and Ice Melting Systems
Permafrost Protection Systems
Turf Conditioning Systems

Contact Information

Uponor, Inc.
5925 148th Street West
Apple Valley, MN 55124 USA
Phone: (800) 321-4739
Fax: (952) 891-1409
www.uponor-usa.com

Uponor Ltd.
2000 Argentia Rd., Plaza 1, Ste. 200
Mississauga, ON L5N 1W1 CANADA
Phone: (888) 994-7726
Fax: (800) 638-9517
www.uponor.ca

¹ProPEX® is a registered trademark of Uponor, Inc. ProPEX™ is a trademark of Uponor Ltd.

2" Uponor AquaPEX® Expansion Joint

Submittal Information
Revision E: May 24, 2013

Project Information

Job Name:

Location:

Part No. Ordered:

Engineer:

Date Submitted:

Contractor:

Submitted By:

Manufacturer's Representative:

Approved By:

Technical Data

Material: Crosslinked polyethylene
PEX-a Engel method; PEX 5106

Standard Grade: 200°F at 80 psi (93°C at 5.5 bar)

Hydrostatic Ratings (PPI): 180°F at 100 psi (82°C at 6.9 bar)
73.4°F at 160 psi (23°C at 11 bar)

Linear Expansion Rate: 1.10"/10°F/100'
(27.94mm/5.56°C/30.48m)



Product Information and Application Use

The 2" Uponor AquaPEX® Expansion Joint offers a complete labor and cost savings solution for potable-plumbing systems requiring expansion joints to accommodate expansion and contraction in long tubing runs.

✓ Description	Part Number	Length	Height	Depth	Weight
2" Uponor AquaPEX Expansion Joint	F8152000	19.75"	13.75"	2.25"	4.5 lbs.

Installation

Approved fitting system is ProPEX®.¹ Installing expansion loops every 50 feet of straight-length tubing is required in horizontal runs. Always install the loop at the midpoint of two fixed points. When using engineered polymer (EP) fittings inline, an expansion loop is required for any run longer than 20 feet and for every 50 feet of tubing. For more information, refer to the Uponor Plumbing Design Assistance Manual (PDAM).

Listings²

cNSFus-fs³; cNSFus-pw; cQAIus; UL; CSA; WH; ETL; PPI TR-4; ICC-ES; IAPMO; BMEC; CCMC

Codes

ICC; IPC; IMC; IRC; UPC; UMC; NSPC; HUD; UFGS; NPC of Canada; NBC of Canada

Standards

ANSI/NSF 14; ANSI/NSF 61; ASTM F876; ASTM F877; ASTM F1960; ASTM F2023; ASTM E84; CAN/ULC S102.2; ASTM E119/UL 263; CAN/ULC S101; ASTM E814/ULC S115; AWWA C904⁴; CSA B137.5; CSA B214; UL 1821³; ULC/ORD-C199P³

Related Applications

PEX-a Plumbing Systems

Contact Information

Uponor, Inc.
5925 148th Street West
Apple Valley, MN 55124 USA
Phone: 800.321.4739
Fax: 952.891.2008
www.uponorpro.com

Uponor Ltd.
2000 Argentia Rd., Plaza 1, Ste. 200
Mississauga, ON L5N 1W1 CANADA
Phone: 888.994.7726
Fax: 800.638.9517
www.uponorpro.com

¹ProPEX® is a registered trademark of Uponor, Inc. ProPEX™ is a trademark of Uponor Ltd.

²Visit listing agency's website for complete information; ³For ½", ¾", 1", 1¼", 1½" and 2" tubing only; ⁴For ¾" tubing and larger

Pre-insulated Uponor AquaPEX[®] with 1/2" Insulation, Straight Lengths

Submittal Information

Revision G: March 7, 2014

Project Information

Job Name:

Location:

Part No. Ordered:

Engineer:

Date Submitted:

Contractor:

Submitted By:

Manufacturer's Representative:

Approved By:

Technical Data

Service Pipe:	Crosslinked polyethylene (PEX-a) Engel-method tubing encased in 1/2" PEX-foam insulation; PEX 5106
Insulation:	Multi-layer, closed-cell, crosslinked polyethylene foam
Thermal Conductivity:	0.250 Btu.in/sq.ft.h.degF
Operating Condition Limits: (hydrostatic ratings)	200°F (93°C) at 80 psi (551 kPa) 180°F (82°C) at 100 psi (689 kPa) 73.4°F (23°C) at 160 psi (1,103 kPa) 1/2", 3/4", 1", 1 1/4", 1 1/2" and 2" Uponor AquaPEX [®] White only: 120°F (49°C) at 130 psi (896 kPa)
Linear Expansion Rate:	1.10"/10°F/100' (27.94mm/5.56°C/30.48m)



Product Information and Application Use

Pre-insulated Uponor AquaPEX[®] tubing offers all the benefits of Uponor AquaPEX — durable, flexible, corrosion-resistant — encased in 1/2" PEX-foam insulation for the additional benefit of insulating potable-water lines and meeting national, state and local energy codes. The tubing is approved for use in hot and cold domestic potable water systems, residential fire safety and hydronic radiant heating and cooling systems containing no ferrous corrodible components or where ferrous components are isolated from the tubing. This product is not intended for direct-burial applications in soil or concrete.

✓ Description	Part Number	O.D.	Heat Loss (at 70° Delta T)	R-Value	Weight (per bundle)
1 1/4" Pre-insulated Uponor AquaPEX with 1/2" insulation, 20-ft. straight length, 100 ft. (5 per bundle)	F6921250	2.53"	15.2 BTU/h/ft	2.9	38.3 lbs.
1 1/2" Pre-insulated Uponor AquaPEX with 1/2" insulation, 20-ft. straight length, 100 ft. (5 per bundle)	F6921500	2.78"	17.1 BTU/h/ft	2.8	47.8 lbs.
2" Pre-insulated Uponor AquaPEX with 1/2" insulation, 20-ft. straight length, 100 ft. (5 per bundle)	F6922000	3.28"	21.0 BTU/h/ft	2.7	72.6 lbs.

Installation

Approved fitting system is ProPEX[®].¹ The product is not intended for direct-burial applications in soil or concrete. Refer to the Uponor AquaPEX Professional Plumbing Installation Guide, AquaSAFE[™] Residential Fire Sprinkler Installation Guide or Uponor Radiant Installation Handbook for additional information.

Listings²

cNSFus-fs³; cNSFus-pw; cQAIus⁵; UL; CSA; WH⁵; ETL⁵; PPI TR-4; ICC-ES; IAPMO; BMEC; CCMC

Codes

ICC; IPC; IMC; IRC; UPC; UMC; NSPC; HUD; UFGS; NPC of Canada; NBC of Canada

Standards

ANSI/NSF 14; ANSI/NSF 61; ASTM F876; ASTM F877; ASTM F1960; ASTM F2023; ASTM E84⁵; CAN/ULC S102.2⁵; ASTM E119/UL 263; CAN/ULC S101; ASTM E814/ULC S115; AWWA C904⁴; CSA B137.5; CSA B214; UL 1821³; ULC/ORD-C199P³

Related Applications

Uponor Plumbing Systems
Radiant Heating and Cooling Systems
AquaSAFE[™] Fire Safety Systems

Contact Information

Uponor, Inc.
5925 148th Street West
Apple Valley, MN 55124 USA
Phone: 800.321.4739
Fax: 952.891.2008
www.uponorpro.com

Uponor Ltd.
2000 Argentia Rd., Plaza 1, Ste. 200
Mississauga, ON L5N 1W1 CANADA
Phone: 888.994.7726
Fax: 800.638.9517
www.uponorpro.com

¹ProPEX[®] is a registered trademark of Uponor, Inc. ProPEX[™] is a trademark of Uponor Ltd.; ²Visit listing agency's website for complete information; ³For 1/2", 3/4", 1", 1 1/4", 1 1/2" and 2" tubing only; ⁴For 3/4" tubing and larger; ⁵See listings/standards for un-insulated Uponor AquaPEX.

Pre-insulated Uponor AquaPEX® with 1/2" Insulation, Coils

Submittal Information
Revision G: March 7, 2014

Project Information

Job Name:	
Location:	Part No. Ordered:
Engineer:	Date Submitted:
Contractor:	Submitted By:
Manufacturer's Representative:	Approved By:

Technical Data

Service Pipe:	Crosslinked polyethylene PEX-a Engel method tubing encased in 1/2" PEX-foam insulation; PEX 5106
Insulation:	Multi-layered, closed-cell, crosslinked polyethylene foam
Thermal Conductivity:	0.250 Btu.in/sq.ft.h.degF
Operating Condition Limits: (hydrostatic ratings)	200°F (93°C) at 80 psi (551 kPa) 180°F (82°C) at 100 psi (689 kPa) 73.4°F (23°C) at 160 psi (1,103 kPa) 1/2"-2" Uponor AquaPEX® White only: 120°F (49°C) at 130 psi (896 kPa)
Linear Expansion Rate:	1.10"/10°F/100' (27.94mm/5.56°C/30.48m)



Product Information and Application Use

Pre-insulated Uponor AquaPEX® tubing offers all the benefits of Uponor AquaPEX (durable, flexible, corrosion-resistant) but encased in 1/2" PEX-foam insulation to insulate potable water lines and meet national, state and local energy codes. The tubing is approved for use in hot and cold domestic potable water systems, residential fire safety and hydronic radiant heating and cooling systems containing no ferrous corrodible components or where ferrous components are isolated from the tubing. This product is not intended for direct-burial applications in soil or concrete.

✓ Description	Part Number	O.D.	Heat Loss (at 70° Delta T)	R-Value	Coil Size (O.D. x Width)	Weight (lb./coil)
1/2" Pre-insulated AquaPEX with 1/2" insulation, 100-ft. coil	F6040500	1.74"	8.9 BTU/hr/ft	3.3	32.38" x 12.40"	8.0 lbs.
3/4" Pre-insulated AquaPEX with 1/2" insulation, 100-ft. coil	F6040750	2.00"	11.1 BTU/hr/ft	3.1	32.38" x 12.40"	12.8 lbs.
1" Pre-insulated AquaPEX with 1/2" insulation, 100-ft. coil	F6041000	2.27"	13.1 BTU/hr/ft	3.0	57.00" x 10.00"	21.0 lbs.
1 1/4" Pre-insulated AquaPEX with 1/2" insulation, 100-ft. coil	F6041250	2.53"	15.2 BTU/hr/ft	2.9	59.00" x 10.00"	30.0 lbs.
1 1/2" Pre-insulated AquaPEX with 1/2" insulation, 100-ft. coil	F6041500	2.78"	17.1 BTU/hr/ft	2.8	59.00" x 10.00"	42.0 lbs.
2" Pre-insulated AquaPEX with 1/2" insulation, 100-ft. coil	F6042000	3.28"	21.0 BTU/hr/ft	2.7	64.00" x 11.00"	65.0 lbs.

Installation

Approved fitting system is ProPEX®. ¹The product is not intended for direct-burial applications in soil or concrete. Refer to the Uponor AquaPEX Professional Plumbing Installation Guide, AquaSAFE™ Residential Fire Sprinkler Installation Guide or Uponor Radiant Installation Handbook for additional information.

Listings²

cNSFus-fs³; cNSFus-pw; cQAIus⁵; UL; CSA; WH⁵; ETL⁵; PPI TR-4; ICC-ES; IAPMO; BMEC; CCMC

Codes

ICC; IPC; IMC; IRC; UPC; UMC; NSPC; HUD; UFGS; NPC of Canada; NBC of Canada

Standards

ANSI/NSF 14; ANSI/NSF 61; ASTM F876; ASTM F877; ASTM F1960; ASTM F2023; ASTM E84⁵; CAN/ULC S102.2⁵; ASTM E119/UL 263; CAN/ULC S101; ASTM E814/ULC S115; AWWA C904⁴; CSA B137.5; CSA B214; UL 1821³; ULC/ORD-C199P³

Related Applications

Uponor Plumbing Systems
Radiant Heating and Cooling Systems
AquaSAFE™ Fire Safety Systems

Contact Information

Uponor, Inc.
5925 148th Street West
Apple Valley, MN 55124 USA
Phone: 800.321.4739
Fax: 952.891.2008
www.uponorpro.com

Uponor Ltd.
2000 Argentia Rd., Plaza 1, Ste. 200
Mississauga, ON L5N 1W1 CANADA
Phone: 888.994.7726
Fax: 800.638.9517
www.uponorpro.com

¹ProPEX® is a registered trademark of Uponor, Inc. ProPEX™ is a trademark of Uponor Ltd.; ²Visit listing agency's website for complete information; ³For 1/2", 3/4", 1", 1 1/4", 1 1/2" and 2" tubing only; ⁴For 3/4" tubing and larger; ⁵See listings/standards for un-insulated Uponor AquaPEX.

Pre-sleeved Uponor AquaPEX® Tubing

Submittal Information
Revision F: May 29, 2013

Project Information

Job Name:

Location:

Part No. Ordered:

Engineer:

Date Submitted:

Contractor:

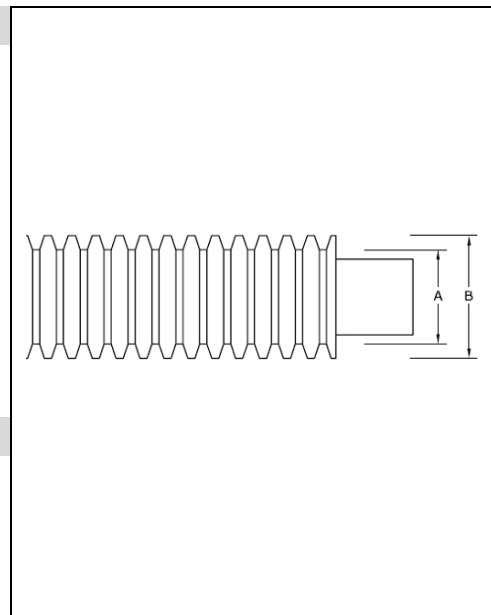
Submitted By:

Manufacturer's Representative:

Approved By:

Technical Data

Sleeve:	High-density polyethylene (HDPE)
Tubing:	Crosslinked polyethylene (PEX-a) Engel method; PEX 5106
Application Temperature Continuous Operation of Sleeve:	5°F (-15°C) to 194°F (90°C)
Standard Grade Hydrostatic Ratings (PPI):	200°F (93°C) at 80 psi 180°F (82°C) at 100 psi 73.4°F (23°C) at 160 psi
Hydrostatic Ratings for ½", ¾" and 1":	120°F (49°C) at 130 psi
Linear Expansion Rate:	1.10"/10°F/100' (27.94mm/5.56°C/30.48m)



Product Information and Application Use

Pre-sleeved Uponor AquaPEX® tubing is used in hot and cold water-distribution systems. The high-density polyethylene (HDPE) corrugated sleeve provides protection for installations in concrete slabs or soil, and allows for removal and replacement of the tubing if required. **Note:** This tubing can also be used in radiant heating and cooling systems containing no ferrous corrodible components or where ferrous components are isolated from the tubing.

✓ Description	Part Number	A	B	Weight
½" Pre-sleeved Uponor AquaPEX Red, 400-ft. coil	F1092500	0.81"	1.00"	41.33 lbs.
½" Pre-sleeved Uponor AquaPEX Blue, 400-ft. coil	F1091500	0.81"	1.00"	41.33 lbs.
¾" Pre-sleeved Uponor AquaPEX Red, 400-ft. coil	F1092750	1.13"	1.36"	74.50 lbs.
¾" Pre-sleeved Uponor AquaPEX Blue, 400-ft. coil	F1091750	1.13"	1.36"	74.50 lbs.

Installation

Approved fitting system is ProPEX®.¹ The installer can tie tubing to rebar with standard steel wire or other fastening devices. Pre-sleeved Uponor AquaPEX tubing will fit in all Uponor concrete floor tube brackets. Refer to the Uponor Professional Plumbing Installation Guide for additional information.

Listings²

cNSFus-fs³; cNSFus-pw; cQAIus; UL; CSA; WH; ETL; PPI TR-4; ICC-ES; IAPMO; BMEC; CCMC

Codes

ICC; IPC; IMC; IRC; UPC; UMC; NSPC; HUD; UFGS; NPC of Canada; NBC of Canada

Standards

ANSI/NSF 14; ANSI/NSF 61; ASTM F876; ASTM F877; ASTM F1960; ASTM F2023; ASTM E119/UL 263; CAN/ULC S101; ASTM E814/ULC S115; AWWA C904⁴; CSA B137.5; CSA B214; UL 1821³; ULC/ORD-C199P³

Related Applications

PEX-a Plumbing Systems
Radiant Heating and Cooling Systems

Contact Information

Uponor, Inc.
5925 148th Street West
Apple Valley, MN 55124 USA
Phone: 800.321.4739
Fax: 952.891.2008
www.uponorpro.com

Uponor Ltd.
2000 Argentia Rd., Plaza 1, Ste. 200
Mississauga, ON L5N 1W1 CANADA
Phone: 888.994.7726
Fax: 800.638.9517
www.uponorpro.com

¹ProPEX® is a registered trademark of Uponor, Inc. ProPEX™ is a trademark of Uponor Ltd.

²Visit listing agency's website for complete information; ³For ½", ¾", 1", 1¼", 1½" and 2" tubing only; ⁴For ¾" tubing and larger

Uponor AquaPEX® Reclaimed Water Tubing

Submittal Information
Revision D: Sept. 10, 2014

Project Information

Job Name:

Location:

Part No. Ordered:

Engineer:

Date Submitted:

Contractor:

Submitted By:

Manufacturer's Representative:

Approved By:

Technical Data

Material:	Crosslinked polyethylene PEX-a Engel method; PEX 5006
Standard Grade	200°F at 80 psi (93°C at 5.5 bar)
Hydrostatic Ratings (PPI):	180°F at 100 psi (82°C at 6.9 bar) 73.4°F at 160 psi (23°C at 11 bar)
Linear Expansion Rate:	1.1"/10°F/100' (27.94mm/5.56°C/30.48m)



Product Information and Application Use

Uponor AquaPEX® Reclaimed Water Tubing is used in reclaimed water (graywater) systems. Uponor AquaPEX Reclaimed Water Tubing is color-coded purple for easy distinction in the plumbing system. It distributes non-potable water for designated applications (laundry, toilet and residential irrigation).

✓ Description	Part Number	I.D.	O.D.	Weight
½" Uponor AquaPEX Reclaimed Water Tubing, 300-ft. coil	F1060502	0.475"	0.625"	18 lbs.
¾" Uponor AquaPEX Reclaimed Water Tubing, 300-ft. coil	F1060752	0.671"	0.875"	34 lbs.
1" Uponor AquaPEX Reclaimed Water Tubing, 300-ft. coil	F1061002	0.862"	1.125"	56 lbs.

Installation

ProPEX® fittings are approved for use with Uponor AquaPEX Reclaimed Water Tubing.¹ Refer to the Uponor Professional Plumbing Installation Guide for more information.

Listings²

cNSFus-rw; cQAIus; CSA; ETL; PPI TR-4; ICC-ES; IAPMO; BMEC; CCMC

Codes

ICC; IPC; IMC; IRC; UPC; UMC; NSPC; HUD; UFGS; NPC of Canada; NBC of Canada

Standards

ANSI/NSF 14; ASTM F876; ASTM F877; ASTM F1960; ASTM F2023; AWWA C904³; CSA B137.5; CSA B214; ASTM E84; CAN/ULC S102.2; ASTM E119/UL 263; CAN/ULC S101; ASTM E814/ULC S115

Related Applications

PEX Plumbing Systems

Contact Information

Uponor, Inc.
5925 148th Street West
Apple Valley, MN 55124 USA
Phone: 800.321.4739
Fax: 952.891.2008
www.uponorpro.com

Uponor Ltd.
2000 Argentia Rd., Plaza 1, Ste. 200
Mississauga, ON L5N 1W1 CANADA
Phone: 888.994.7726
Fax: 800.638.9517
www.uponorpro.com

¹ProPEX® is a registered trademark of Uponor, Inc. ProPEX™ is a trademark of Uponor Ltd.

²Visit listing agency's website for complete information.

³For ¾" tubing and larger

Uponor AquaPEX® Blue, Straight Length

Submittal Information
Revision C: May 24, 2013

Project Information

Job Name:

Location:

Part No. Ordered:

Engineer:

Date Submitted:

Contractor:

Submitted By:

Manufacturer's Representative:

Approved By:

Technical Data

Material:	Crosslinked polyethylene PEX-a Engel Method; PEX 5206
Standard Grade Hydrostatic Ratings (PPI):	200°F (93°C) at 80 psi 180°F (82°C) at 100 psi 73.4°F (23°C) at 160 psi
Linear Expansion Rate:	1.10"/10°F/100' (27.94mm/5.56°C/30.48m)



Product Information and Application Use

Uponor AquaPEX® Blue tubing is used primarily in cold potable-water distribution systems, but can also be used in radiant heating and cooling systems containing no ferrous corrodible components or where ferrous components are isolated from the tubing.

✓	Description	Part Number	I.D.	O.D.	Weight
	½" Uponor AquaPEX Blue, 20-ft. straight length, 500 ft.	F3930500	0.475"	0.625"	28.0 lbs.
	¾" Uponor AquaPEX Blue, 20-ft. straight length, 300 ft.	F3930750	0.671"	0.875"	31.0 lbs.
	1" Uponor AquaPEX Blue, 20-ft. straight length, 200 ft.	F3921000	0.862"	1.125"	35.0 lbs.

Installation

Approved fitting system is ProPEX®.¹ Refer to the Uponor Professional Plumbing Installation Guide for additional information.

Listings²

cNSFus-fs³; cNSFus-pw; cQAIus; UL; CSA; WH; ETL; PPI TR-4; ICC-ES; IAPMO; BMEC; CCMC

Codes

ICC; IPC; IMC; IRC; UPC; UMC; NSPC; HUD; UFGS; NPC of Canada; NBC of Canada

Standards

ANSI/NSF 14; ANSI/NSF 61; ASTM F876; ASTM F877; ASTM F1960; ASTM F2023; ASTM E84; CAN/ULC S102.2; ASTM E119/UL 263; CAN/ULC S101; ASTM E814/ULC S115; AWWA C904⁴; CSA B137.5; CSA B214; UL 1821³; ULC/ORD-C199P³

Related Applications

PEX-a Plumbing Systems
Radiant Heating and Cooling Systems

Contact Information

Uponor, Inc.
5925 148th Street West
Apple Valley, MN 55124 USA
Phone: 800.321.4739
Fax: 952.891.2008
www.uponorpro.com

Uponor Ltd.
2000 Argentia Rd., Plaza 1, Ste. 200
Mississauga, ON L5N 1W1 CANADA
Phone: 888.994.7726
Fax: 800.638.9517
www.uponorpro.com

¹ProPEX® is a registered trademark of Uponor, Inc. ProPEX™ is a trademark of Uponor Ltd.

²Visit listing agency's website for complete information; ³For ½", ¾", 1", 1¼", 1½" and 2" tubing only; ⁴For ¾" tubing and larger

Uponor AquaPEX® Red, Straight Length

Submittal Information
Revision B: May 24, 2013

Project Information

Job Name:

Location:

Part No. Ordered:

Engineer:

Date Submitted:

Contractor:

Submitted By:

Manufacturer's Representative:

Approved By:

Technical Data

Material:	Crosslinked polyethylene PEX-a Engel Method; PEX 5206
Standard Grade Hydrostatic Ratings (PPI):	200°F (93°C) at 80 psi 180°F (82°C) at 100 psi 73.4°F (23°C) at 160 psi
Linear Expansion Rate:	1.10"/10°F/100' (27.94mm/5.56°C/30.48m)



Product Information and Application Use

Uponor AquaPEX® Red tubing is used for hot and cold domestic potable water distribution and radiant heating systems containing no ferrous corrodible components or where ferrous components are isolated from the tubing.

✓	Description	Part Number	I.D.	O.D.	Weight
	½" Uponor AquaPEX Red, 20-ft. straight length, 500 ft.	F2930500	0.475"	0.625"	28.0 lbs.
	¾" Uponor AquaPEX Red, 20-ft. straight length, 300 ft.	F2930750	0.671"	0.875"	31.0 lbs.
	1" Uponor AquaPEX Red, 20-ft. straight length, 200 ft.	F2921000	0.862"	1.125"	35.0 lbs.

Installation

Approved fitting system is ProPEX®.¹ Refer to the Uponor Professional Plumbing Installation Guide for more information.

Listings²

cNSFus-fs³; cNSFus-pw; cQAIus; UL; CSA; WH; ETL; PPI TR-4; ICC-ES; IAPMO; BMEC; CCMC

Codes

ICC; IPC; IMC; IRC; UPC; UMC; NSPC; HUD; UFGS; NPC of Canada; NBC of Canada

Standards

ANSI/NSF 14; ANSI/NSF 61; ASTM F876; ASTM F877; ASTM F1960; ASTM F2023; ASTM E84; CAN/ULC S102.2; ASTM E119/UL 263; CAN/ULC S101; ASTM E814/ULC S115; AWWA C904⁴; CSA B137.5; CSA B214; UL 1821³; ULC/ORD-C199P³

Related Applications

PEX-a Plumbing Systems
Radiant Heating and Cooling Systems

Contact Information

Uponor, Inc.
5925 148th Street West
Apple Valley, MN 55124 USA
Phone: 800.321.4739
Fax: 952.891.2008
www.uponorpro.com

Uponor Ltd.
2000 Argentia Rd., Plaza 1, Ste. 200
Mississauga, ON L5N 1W1 CANADA
Phone: 888.994.7726
Fax: 800.638.9517
www.uponorpro.com

¹ProPEX® is a registered trademark of Uponor, Inc. ProPEX™ is a trademark of Uponor Ltd.

²Visit listing agency's website for complete information; ³For ½", ¾", 1", 1¼", 1½" and 2" tubing only; ⁴For ¾" tubing and larger

Uponor AquaPEX® White, Straight Length

Submittal Information
Revision F: May 24, 2013

Project Information

Job Name:

Location:

Part No. Ordered:

Engineer:

Date Submitted:

Contractor:

Submitted By:

Manufacturer's Representative:

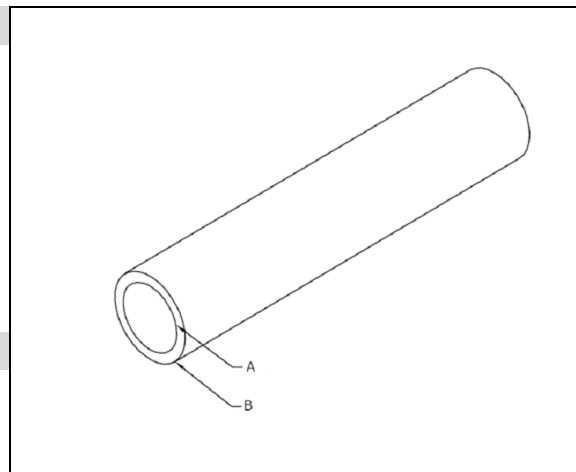
Approved By:

Technical Data

Material: Crosslinked polyethylene
PEX-a Engel Method; PEX 5106

Standard Grade
Hydrostatic Ratings (PPI): 200°F (93°C) at 80 psi (551 kPa)
180°F (82°C) at 100 psi (689 kPa)
73.4°F (23°C) at 160 psi (1,103 kPa)
1/2", 3/4", 1", 1 1/4", 1 1/2" and 2" Uponor AquaPEX® White
tubing only: 120°F (49°C) at 130 psi (896 kPa)

Linear Expansion Rate: 1.10"/10°F/100' (27.94mm/5.56°C/30.48m)



Product Information and Application Use

Uponor AquaPEX White, straight length tubing, is used for hot and cold domestic potable water distribution, residential fire safety and radiant heating and cooling systems containing no ferrous corrodible components or where ferrous components are isolated from the tubing.

✓	Description	Part Number	A	B	Weight
	1/2" Uponor AquaPEX White, 20-ft. straight length, 500 ft.	F1930500	0.475"	0.625"	28.0 lbs.
	3/4" Uponor AquaPEX White, 20-ft. straight length, 300 ft.	F1930750	0.671"	0.875"	31.0 lbs.
	1" Uponor AquaPEX White, 20-ft. straight length, 200 ft.	F1921000	0.862"	1.125"	35.0 lbs.
	1 1/4" Uponor AquaPEX White, 20-ft. straight length, 100 ft.	F1921250	1.054"	1.375"	32.0 lbs.
	1 1/2" Uponor AquaPEX White, 20-ft. straight length, 100 ft.	F1921500	1.244"	1.625"	42.0 lbs.
	2" Uponor AquaPEX White, 20-ft. straight length, 100 ft.	F1922000	1.629"	2.125"	68.1 lbs.
	3" Uponor AquaPEX White, 20-ft. straight length, 60 ft.	F1923000	2.400"	3.125"	77.0 lbs.

Installation

Use ProPEX® fittings¹ for 3/8" through 2" tubing. Use WIPEX™ fittings for 3" tubing. Refer to the Uponor Professional Plumbing Installation Guide, Radiant Floor Heating Installation Handbook or AquaSAFE™ Residential Fire Sprinkler Installation Guide for more information.

Listings²

cNSFus-fs³; cNSFus-pw; cQAIus; UL; CSA; WH; ETL; PPI TR-4; ICC-ES; IAPMO; BMEC; CCMC

Codes

ICC; IPC; IMC; IRC; UPC; UMC; NSPC; HUD; UFGS; NPC of Canada; NBC of Canada

Standards

ANSI/NSF 14; ANSI/NSF 61; ASTM F876; ASTM F877; ASTM F1960; ASTM F2023; ASTM E84; CAN/ULC S102.2; ASTM E119/UL 263; CAN/ULC S101; ASTM E814/ULC S115; AWWA C904⁴; CSA B137.5; CSA B214; UL 1821³; ULC/ORD-C199P³

Related Applications

PEX-a Plumbing Systems
AquaSAFE™ Residential Fire Safety Systems
Radiant Heating and Cooling Systems

Contact Information

Uponor, Inc.
5925 148th Street West
Apple Valley, MN 55124 USA
Phone: 800.321.4739
Fax: 952.891.2008
www.uponorpro.com

Uponor Ltd.
2000 Argentia Rd., Plaza 1, Ste. 200
Mississauga, ON L5N 1W1 CANADA
Phone: 888.994.7726
Fax: 800.638.9517
www.uponorpro.com

¹ProPEX® is a registered trademark of Uponor, Inc. ProPEX™ is a trademark of Uponor Ltd.

²Visit listing agency's website for complete information; ³For 1/2", 3/4", 1", 1 1/4", 1 1/2" and 2" tubing only; ⁴For 3/4" tubing and larger

HDPE Corrugated Sleeve

Submittal Information
Revision B: Aug. 28, 2013

Project Information

Job Name:

Location:

Part No. Ordered:

Engineer:

Date Submitted:

Contractor:

Submitted By:

Manufacturer's Representative:

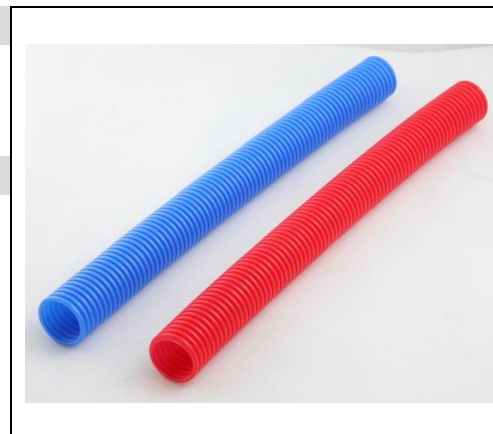
Approved By:

Technical Data

Material: High-density polyethylene (HDPE)

Application Temperature Continuous: 5°F (-15°C) to 194°F (90°C)

Operation of Sleeve:



Product Information and Application Use

High-density Polyethylene (HDPE) Corrugated Sleeves are used in hot and cold potable-water distribution systems, primarily in commercial applications where the potable tubing is installed in the slab. Designed for use with Uponor AquaPEX® crosslinked polyethylene (PEX-a) tubing, the sleeve provides protection during installation and allows for removal and replacement of the tubing, if necessary. This product can also be used in radiant heating and cooling systems with Wirsbo hePEX™ tubing. However, if using Uponor AquaPEX tubing (which does not have an oxygen barrier), the tubing can only be used in systems containing no ferrous corrodible components or where ferrous components are isolated from the tubing.

✓ Description	Part Number	Diameter	Weight
½" HDPE Corrugated Sleeve, Red, 400-ft. coil	F1035400	1.00"	17.33 lbs.
½" HDPE Corrugated Sleeve, Blue, 400-ft. coil	F1055400	1.00"	17.33 lbs.
¾" HDPE Corrugated Sleeve, Red, 400-ft. coil	F1037400	1.36"	30.50 lbs.
¾" HDPE Corrugated Sleeve, Blue, 400-ft. coil	F1057400	1.36"	30.50 lbs.

Installation

Tie sleeving to rebar with standard steel wire or other fastening devices. Corrugated sleeves will fit in all Uponor concrete floor tube brackets. Refer to the Uponor Professional Plumbing Installation Guide or Radiant Heating Installation Handbook for additional information.

Standards

N/A

Codes

N/A

Listings

CAN/ULC-S101; ANSI/UL 263

Related Applications

PEX-a Plumbing Systems
Radiant Heating and Cooling Systems

Contact Information

Uponor, Inc.
5925 148th Street West
Apple Valley, MN 55124 USA
Phone: 800.321.4739
Fax: 952.891.2008
www.uponorpro.com

Uponor Ltd.
2000 Argentia Rd., Plaza 1, Ste. 200
Mississauga, ON L5N 1W1 CANADA
Phone: 888.994.7726
Fax: 800.638.9517
www.uponorpro.com

Uponor AquaPEX® Blue

Submittal Information
Revision E: May 24, 2013

Project Information

Job Name:

Location:

Part No. Ordered:

Engineer:

Date Submitted:

Contractor:

Submitted By:

Manufacturer's Representative:

Approved By:

Technical Data

Material:	Crosslinked polyethylene PEX-a Engel method; PEX 5206
Standard Grade Hydrostatic Ratings (PPI):	200°F at 80 psi (93°C at 5.5 bar) 180°F at 100 psi (82°C at 6.9 bar) 73.4°F at 160 psi (23°C at 11 bar)
Linear Expansion Rate:	1.10"/10°F/100' (27.94mm/5.56°C/30.48m)



Product Information and Application Use

Uponor AquaPEX® Blue tubing is used primarily in cold potable-water distribution systems, but can also be used in radiant heating and cooling systems containing no ferrous corrodible components or where ferrous components are isolated from the tubing.

✓ Description	Part Number	I.D.	O.D.	Weight
½" Uponor AquaPEX Blue, 100-ft. coil	F3040500	0.475"	0.625"	6 lbs.
½" Uponor AquaPEX Blue, 300-ft. coil	F3060500	0.475"	0.625"	18 lbs.
½" Uponor AquaPEX Blue, 1,000-ft. coil	F3120500	0.475"	0.625"	54 lbs.
¾" Uponor AquaPEX Blue, 100-ft. coil	F3040750	0.671"	0.875"	10 lbs.
¾" Uponor AquaPEX Blue, 300-ft. coil	F3060750	0.671"	0.875"	34 lbs.
¾" Uponor AquaPEX Blue, 500-ft. coil	F3100750	0.671"	0.875"	54 lbs.
1" Uponor AquaPEX Blue, 100-ft. coil	F3041000	0.862"	1.125"	20 lbs.
1" Uponor AquaPEX Blue, 300-ft. coil	F3061000	0.862"	1.125"	56 lbs.
1" Uponor AquaPEX Blue, 500-ft. coil	F3101000	0.862"	1.125"	93 lbs.

Installation

Approved fitting system is ProPEX®.¹ Refer to the Uponor Professional Plumbing Installation Guide for additional information.

Listings²

cNSFus-fs³; cNSFus-pw; cQAIus; UL; CSA; WH; ETL; PPI TR-4; ICC-ES; IAPMO; BMEC; CCMC

Codes

ICC; IPC; IMC; IRC; UPC; UMC; NSPC; HUD; UFGS; NPC of Canada; NBC of Canada

Standards

ANSI/NSF 14; ANSI/NSF 61; ASTM F876; ASTM F877; ASTM F1960; ASTM F2023; ASTM E84; CAN/ULC S102.2; ASTM E119/UL 263; CAN/ULC S101; ASTM E814/ULC S115; AWWA C904⁴; CSA B137.5; CSA B214; UL 1821³; ULC/ORD-C199P³

Related Applications

PEX-a Plumbing Systems
Radiant Heating and Cooling Systems

Contact Information

Uponor, Inc.
5925 148th Street West
Apple Valley, MN 55124 USA
Phone: 800.321.4739
Fax: 952.891.2008
www.uponorpro.com

Uponor Ltd.
2000 Argentia Rd., Plaza 1, Ste. 200
Mississauga, ON L5N 1W1 CANADA
Phone: 888.994.7726
Fax: 800.638.9517
www.uponorpro.com

¹ProPEX® is a registered trademark of Uponor, Inc. ProPEX™ is a trademark of Uponor Ltd.

²Visit listing agency's website for complete information; ³For ½", ¾", 1", 1¼", 1½" and 2" tubing only; ⁴For ¾" tubing and larger

Uponor AquaPEX® Red

Submittal Information
Revision E: May 24, 2013

Project Information

Job Name:

Location:

Part No. Ordered:

Engineer:

Date Submitted:

Contractor:

Submitted By:

Manufacturer's Representative:

Approved By:

Technical Data

Material:	Crosslinked polyethylene PEX-a Engel method; PEX 5206
Standard Grade	200°F at 80 psi (93°C at 5.5 bar)
Hydrostatic Ratings (PPI):	180°F at 100 psi (82°C at 6.9 bar) 73.4°F at 160 psi (23°C at 11 bar)
Linear Expansion Rate:	1.10"/10°F/100' (27.94mm/5.56°C/30.48m)



Product Information and Application Use

Uponor AquaPEX® Red tubing is used primarily for hot potable-water distribution, but can also be used in radiant heating and cooling systems containing no ferrous corrodible components or where ferrous components are isolated from the tubing.

✓ Description	Part Number	I.D.	O.D.	Weight
½" Uponor AquaPEX Red, 100-ft. coil	F2040500	0.475"	0.625"	6 lbs.
½" Uponor AquaPEX Red, 300-ft. coil	F2060500	0.475"	0.625"	18 lbs.
½" Uponor AquaPEX Red, 1,000-ft. coil	F2120500	0.475"	0.625"	54 lbs.
¾" Uponor AquaPEX Red, 100-ft. coil	F2040750	0.671"	0.875"	10 lbs.
¾" Uponor AquaPEX Red, 300-ft. coil	F2060750	0.671"	0.875"	34 lbs.
¾" Uponor AquaPEX Red, 500-ft. coil	F2100750	0.671"	0.875"	54 lbs.
1" Uponor AquaPEX Red, 100-ft. coil	F2041000	0.862"	1.125"	20 lbs.
1" Uponor AquaPEX Red, 300-ft. coil	F2061000	0.862"	1.125"	56 lbs.
1" Uponor AquaPEX Red, 500-ft. coil	F2101000	0.862"	1.125"	93 lbs.

Installation

Approved fitting system is ProPEX®.¹ Refer to the Uponor Professional Plumbing Installation Guide for more information.

Listings²

cNSFus-fs³; cNSFus-pw; cQAIus; UL; CSA; WH; ETL; PPI TR-4; ICC-ES; IAPMO; BMEC; CCMC

Codes

ICC; IPC; IMC; IRC; UPC; UMC; NSPC; HUD; UFGS; NPC of Canada; NBC of Canada

Standards

ANSI/NSF 14; ANSI/NSF 61; ASTM F876; ASTM F877; ASTM F1960; ASTM F2023; ASTM E84; CAN/ULC S102.2; ASTM E119/UL 263; CAN/ULC S101; ASTM E814/ULC S115; AWWA C904⁴; CSA B137.5; CSA B214; UL 1821³; ULC/ORD-C199P³

Related Applications

PEX-a Plumbing Systems
Radiant Heating and Cooling Systems

Contact Information

Uponor, Inc.
5925 148th Street West
Apple Valley, MN 55124 USA
Phone: 800.321.4739
Fax: 952.891.2008
www.uponorpro.com

Uponor Ltd.
2000 Argentia Rd., Plaza 1, Ste. 200
Mississauga, ON L5N 1W1 CANADA
Phone: 888.994.7726
Fax: 800.638.9517
www.uponorpro.com

¹ProPEX® is a registered trademark of Uponor, Inc. ProPEX™ is a trademark of Uponor Ltd.

²Visit listing agency's website for complete information; ³For ½", ¾", 1", 1¼", 1½" and 2" tubing only; ⁴For ¾" tubing and larger

Uponor AquaPEX® White

Submittal Information
Revision H: June 27, 2013

Project Information

Job Name:	
Location:	Part No. Ordered:
Engineer:	Date Submitted:
Contractor:	Submitted By:
Manufacturer's Representative:	Approved By:

Technical Data

Material:	Crosslinked polyethylene PEX-a Engel Method; PEX 5106
Standard Grade Hydrostatic Ratings (PPI):	200°F (93°C) at 80 psi (551 kPa) 180°F (82°C) at 100 psi (689 kPa) 73.4°F (23°C) at 160 psi (1,103 kPa) ½", ¾", 1", 1¼", 1½" and 2" Uponor AquaPEX® White only; 120°F (49°C) at 130 psi (896 kPa)
Linear Expansion Rate:	1.1"/10°F/100' (27.94mm/5.56°C/30.48m)



Product Information and Application Use

Uponor AquaPEX White is tubing used for hot and cold domestic potable water distribution, residential fire safety and radiant heating and cooling systems containing no ferrous corrodible components or where ferrous components are isolated from the tubing.

✓ Description	Part Number	I.D.	O.D.	Weight
¼" Uponor AquaPEX White, 100-ft. coil	F1040250	0.241"	0.375"	4.0 lbs.
¾" Uponor AquaPEX White, 400-ft. coil	F1090375	0.350"	0.500"	20.0 lbs.
¾" Uponor AquaPEX White, 1,000-ft. coil	F1120375	0.350"	0.500"	44.0 lbs.
½" Uponor AquaPEX White, 100-ft. coil	F1040500	0.475"	0.625"	6.0 lbs.
½" Uponor AquaPEX White, 300-ft. coil	F1060500	0.475"	0.625"	18.0 lbs.
½" Uponor AquaPEX White, 500-ft. coil	F1100500	0.475"	0.625"	27.6 lbs.
½" Uponor AquaPEX White, 1,000-ft. coil	F1120500	0.475"	0.625"	54.0 lbs.
⅝" Uponor AquaPEX White, 300-ft. coil	F1060625	0.574"	0.750"	28.0 lbs.
⅝" Uponor AquaPEX White, 1000-ft. coil	F1120625	0.574"	0.750"	86.0 lbs.
¾" Uponor AquaPEX White, 100-ft. coil	F1040750	0.671"	0.875"	10.0 lbs.
¾" Uponor AquaPEX White, 300-ft. coil	F1060750	0.671"	0.875"	34.0 lbs.
¾" Uponor AquaPEX White, 500-ft. coil	F1100750	0.671"	0.875"	54.0 lbs.
1" Uponor AquaPEX White, 100-ft. coil	F1041000	0.862"	1.125"	20.0 lbs.
1" Uponor AquaPEX White, 300-ft. coil	F1061000	0.862"	1.125"	56.0 lbs.
1" Uponor AquaPEX White, 500-ft. coil	F1101000	0.862"	1.125"	93.0 lbs.
1¼" Uponor AquaPEX White, 100-ft. coil	F1061250	1.054"	1.375"	34.0 lbs.
1¼" Uponor AquaPEX White, 300-ft. coil	F1021250	1.054"	1.375"	106.0 lbs.
1½" Uponor AquaPEX White, 100-ft. coil	F1061500	1.244"	1.625"	44.0 lbs.
1½" Uponor AquaPEX White, 300-ft. coil	F1021500	1.244"	1.625"	133.0 lbs.
2" Uponor AquaPEX White, 100-ft. coil	F1062000	1.629"	2.125"	68.2 lbs.
2" Uponor AquaPEX White, 200-ft. coil	F1052000	1.629"	2.125"	136.4 lbs.
2" Uponor AquaPEX White, 300-ft. coil	F1022000	1.629"	2.125"	204.6 lbs.
3" Uponor AquaPEX White, 100-ft. coil	F1063000	2.400"	3.125"	128.0 lbs.
3" Uponor AquaPEX White, 350-ft. coil	F1023000	2.400"	3.125"	442.0 lbs.

Installation

Use ProPEX® fittings¹ for ¾" through 2" tubing. Use WIPEX™ fittings for 3" tubing. Refer to the Uponor Professional Plumbing Installation Guide, Radiant Floor Heating Installation Handbook or AquaSAFE™ Residential Fire Sprinkler Installation Guide for more information.

Listings ²	Codes	Standards
cNSFus-fs ³ ; cNSFus-pw; cQAIus; UL; CSA; WH; ETL; PPI TR-4; ICC-ES; IAPMO; BMEC; CCMC	ICC; IPC; IMC; IRC; UPC; UMC; NSPC; HUD; UFGS; NPC of Canada; NBC of Canada	ANSI/NSF 14; ANSI/NSF 61; ASTM F876; ASTM F877; ASTM F1960; ASTM F2023; ASTM E84; CAN/ULC S102.2; ASTM E119/UL 263; CAN/ULC S101; ASTM E814/ULC S115; AWWA C904 ⁴ ; CSA B137.5; CSA B214; UL 1821 ³ ; ULC/ORD-C199P ³

Related Applications

PEX-a Plumbing Systems
Radiant Heating and Cooling Systems
AquaSAFE™ Fire Safety Systems

Contact Information

Uponor, Inc. 5925 148 th Street West Apple Valley, MN 55124 USA Phone: 800.321.4739 Fax: 952.891.2008 www.uponorpro.com	Uponor Ltd. 2000 Argentia Rd., Plaza 1, Ste. 200 Mississauga, ON L5N 1W1 CANADA Phone: 888.994.7726 Fax: 800.638.9517 www.uponorpro.com
---	--

¹ProPEX® is a registered trademark of Uponor, Inc. ProPEX™ is a trademark of Uponor Ltd.

²Visit listing agency's website for complete information; ³For ½", ¾", 1", 1¼", 1½" and 2" tubing only; ⁴For ¾" tubing and larger

ProPEX[®] Lead-free (LF) Brass CPVC Socket Adapter

Submittal Information
Revision A: June 3, 2014

Project Information

Job Name:

Location:

Part No. Ordered:

Engineer:

Date Submitted:

Contractor:

Submitted By:

Manufacturer's Representative:

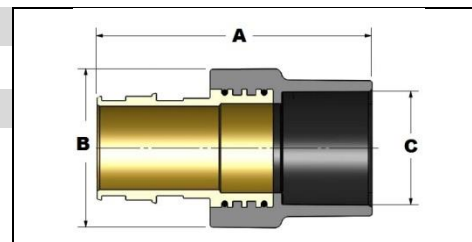
Approved By:

Technical Data

Material: C69300 Brass; ProTherm 4529 CPVC

Product Information and Application Use

ProPEX[®] Lead-free (LF) Brass CPVC Socket Adapters transition Uponor PEX tubing to CPVC copper tube size (CTS) pipe for use in hot and cold domestic potable water systems and hydronic radiant heating and cooling systems.¹



✓ Description	Part Number	A	B	C	Weight
ProPEX LF Brass x CPVC Socket Adapter, 1/4" PEX x 1/4" CPVC	CP4511313	3.7"	2.11"	1.25" CTS	0.62 lbs.
ProPEX LF Brass x CPVC Socket Adapter, 1/2" PEX x 1/2" CPVC	CP4511515	4.2"	2.4"	1.50" CTS	0.77 lbs.
ProPEX LF Brass x CPVC Socket Adapter, 2" PEX x 2" CPVC	CP4512020	5.2"	3.00"	2.00" CTS	1.42 lbs.

Installation

Use the appropriate Uponor ProPEX Ring for the tubing (sold separately). Refer to the Uponor AquaPEX[®] Professional Plumbing Installation Guide or Uponor Radiant Floor Heating Installation Handbook for additional information. Follow all CPVC instructions and guidelines for proper CPVC connections.

Standards

CAN/CSA B137.5; ASTM F877; ASTM F1960; ASTM D2846

Codes

IPC; UPC; NSPC; NPC of Canada

Listings

ICC PMG-1006; ANSI/NSF 14- and 61-certified; U.P. Code, NSF 372

Related Applications

PEX-a Plumbing Systems
Radiant Heating and Cooling Systems
Snow and Ice Melting Systems
Permafrost Protection Systems
Turf Conditioning Systems

Contact Information

Uponor, Inc.
5925 148th Street West
Apple Valley, MN 55124 USA
Phone: (800) 321-4739
Fax: (952) 891-1409
www.uponorpro.com

Uponor Ltd.
2000 Argentia Rd., Plaza 1, Ste. 200
Mississauga, ON L5N 1W1 CANADA
Phone: (888) 994-7726
Fax: (800) 638-9517
www.uponorpro.com

¹ProPEX[®] is a registered trademark of Uponor, Inc. ProPEX[™] is a trademark of Uponor Ltd.

ProPEX® Lead-free (LF) Brass CPVC Spigot Adapter

Submittal Information
Revision A: June 3, 2014

Project Information

Job Name:

Location:

Part No. Ordered:

Engineer:

Date Submitted:

Contractor:

Submitted By:

Manufacturer's Representative:

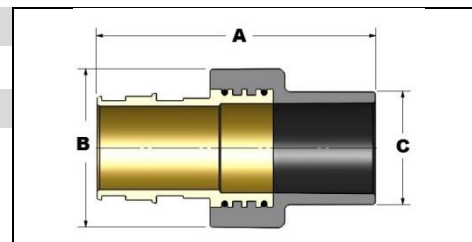
Approved By:

Technical Data

Material: C69300 Brass; ProTherm 4529 CPVC

Product Information and Application Use

ProPEX® Lead-free (LF) Brass CPVC Spigot Adapters transition Uponor PEX tubing to CPVC copper tube size (CTS) fittings for use in hot and cold domestic potable water systems and hydronic radiant heating and cooling systems.¹



✓ Description	Part Number	A	B	C	Weight
ProPEX LF Brass x CPVC Spigot Adapter, 1/4" PEX x 1/4" CPVC	CP4501313	3.7"	2.11"	1.25" CTS	0.60 lbs.
ProPEX LF Brass x CPVC Spigot Adapter, 1/2" PEX x 1/2" CPVC	CP4501515	4.2"	2.4"	1.50" CTS	0.75 lbs.
ProPEX LF Brass x CPVC Spigot Adapter, 2" PEX x 2" CPVC	CP4502020	5.3"	3.00"	2.00" CTS	1.40 lbs.

Installation

Use the appropriate Uponor ProPEX Ring for the tubing (sold separately). Refer to the Uponor AquaPEX® Professional Plumbing Installation Guide or Uponor Radiant Floor Heating Installation Handbook for additional information. Follow all CPVC instructions and guidelines for proper CPVC connections.

Standards

CAN/CSA B137.5; ASTM F877; ASTM F1960; ASTM D2846

Codes

IPC; UPC; NSPC; NPC of Canada

Listings

ICC PMG-1006; ANSI/NSF 14- and 61-certified; U.P. Code, NSF 372

Related Applications

PEX-a Plumbing Systems
Radiant Heating and Cooling Systems
Snow and Ice Melting Systems
Permafrost Protection Systems
Turf Conditioning Systems

Contact Information

Uponor, Inc.
5925 148th Street West
Apple Valley, MN 55124 USA
Phone: (800) 321-4739
Fax: (952) 891-1409
www.uponorpro.com

Uponor Ltd.
2000 Argentia Rd., Plaza 1, Ste. 200
Mississauga, ON L5N 1W1 CANADA
Phone: (888) 994-7726
Fax: (800) 638-9517
www.uponorpro.com

¹ProPEX® is a registered trademark of Uponor, Inc. ProPEX™ is a trademark of Uponor Ltd.